



# OFF-THE-ROAD PRODUCT GUIDE

**BRIDGESTONE**

**Firestone**

**Welcome,**

This OTR Product Guide is designed to provide quality product information for the Bridgestone and Firestone lines of off-the-road products.

Please utilize the Machine Summary sections found on pages 4 and 5 for a convenient overview of both product portfolios.

Both Bridgestone and Firestone products contained within are separated into sections for Radial, Bias, and Specialty tires. All sizes for a tread pattern now appear in one place.

Firestone has a third section for Compact tire products containing select radial and bias tires.

Bridgestone and Firestone tires are subject to ongoing development. Specifications are current as of January 10, 2022 and are subject to change without notice. Although great care has been taken in producing this guide, we can accept no responsibility for any loss or damage resulting from undetected errors, omissions, or misprints that may have occurred. For complete information regarding tire specifications, consult your local Bridgestone dealer or contact a Bridgestone OTR representative.

CUSTOMER SERVICE

**800.572.8905**

[OTRCUSTOMERSERVICE@BFUSA.COM](mailto:OTRCUSTOMERSERVICE@BFUSA.COM)



# TABLE OF CONTENTS



<b>MACHINE SUMMARY</b> RADIAL, BIAS, SPECIALTY .....	4	<b>METERIC SIZE CONVERSION CHART</b> .....	5
<b>SPECIFICATION CODES</b> .....	4	<b>CONVERSION CHART</b> STAR RATING TO PLY RATING .....	5

## | **MASTERCORE TIRES**

<b>VRPS</b> V-STEEL ROCK PREMIUM SERVICE .....	7	<b>VRWP</b> V-STEEL ROCK WEAR PREMIUM .....	8
<b>VRF</b> V-STEEL ROCK FAST PREMIUM .....	7	<b>VZTB</b> V-STEEL Z-TRACTION BEYOND .....	9
<b>VREV</b> V-STEEL ROCK EXTRA V-OPERATION .....	8		

## | **RADIAL TIRES**

<b>VFT</b> V-STEEL F-TRACTION .....	11	<b>VREP</b> V-STEEL ROCK E-PREMIUM RADIAL .....	21
<b>VSWAS</b> V-STEEL SNOW WEDGE ALL SEASON .....	11	<b>VRLS</b> V-STEEL R-LUG S .....	22
<b>VSW</b> V-STEEL SNOW WEDGE .....	12	<b>VRPS</b> V-STEEL ROCK PREMIUM SERVICE .....	23
<b>VKT</b> V-STEEL K-TRACTION .....	13	<b>VRQP</b> V-STEEL ROCK QUARRY PREMIUM .....	24
<b>VUT</b> V-STEEL ULTRA TRACTION .....	14	<b>VZTS</b> V-STEEL Z-TRACTION S .....	24
<b>VRL</b> V-STEEL R-LUG .....	15	<b>VLTS</b> V-STEEL L-TRACTION S .....	25
<b>VLT</b> V-STEEL L-TRACTION .....	15	<b>VSNT</b> V-STEEL N-TRACTION .....	25
<b>VMT</b> V-STEEL M-TRACTION .....	16	<b>VSNL</b> V-STEEL N-LUG .....	26
<b>VJT</b> V-STEEL J-TRACTION .....	17	<b>VSDL</b> V-STEEL D-LUG .....	27
<b>VTS</b> V-STEEL TRACTION AND STABILITY .....	17	<b>VSDR</b> V-STEEL SUPER DEEP ROCK .....	28
<b>VELS</b> V-STEEL E-LUG S .....	18	<b>VSdT</b> V-STEEL SUPER DEEP TRACTION .....	28
<b>VELSL</b> V-STEEL E-LUG SL .....	18	<b>VSMS</b> V-STEEL SMOOTH TREAD MINE SERVICE .....	29
<b>VMTP</b> V-STEEL M-TRACTION PREMIUM .....	19	<b>VSMS2</b> V-STEEL SMOOTH TREAD MINE SERVICE 2 .....	29
<b>VMTS</b> V-STEEL M-TRACTION S .....	20	<b>VMDL</b> V-STEEL MINING D-LUG .....	30
<b>VRDP</b> V-STEEL ROCK DEEP PREMIUM .....	20		

## | **BIAS TIRES**

<b>FG</b> FAST GRIP .....	32	<b>RLS</b> R-LUG S .....	33
<b>RL</b> R-LUG .....	32	<b>DL</b> D-LUG .....	34
<b>VL2</b> V-LUG 2 .....	33	<b>STMS</b> SMOOTH TREAD-MS .....	34

## | **SPECIALTY TIRES**

<b>VGT</b> V-STEEL G-TRACTION .....	36	<b>VCHS</b> V-STEEL CONTAINER HANDLER S .....	40
<b>VHS / VHS2</b> V-STEEL HIGH SPEED SERVICE .....	36	<b>VRLS</b> V-STEEL R-LUG S .....	40
<b>VSb</b> V-STEEL S-BLOCK .....	37	<b>VSDL</b> V-STEEL D-LUG .....	41
<b>VSJ</b> V-STEEL JAMAL .....	37	<b>VSMS</b> V-STEEL SMOOTH TREAD MINE SERVICE .....	41
<b>VCH</b> V-STEEL CONTAINER HANDLER .....	38	<b>RL</b> R-LUG .....	42
<b>VCHD</b> V-STEEL CONTAINER HANDLER DEEP .....	38	<b>ELS2</b> E-LUG S2 .....	42
<b>VCHR</b> V-STEEL CONTAINER HANDLER-R .....	39	<b>STMS</b> SMOOTH TREAD-MS .....	43
<b>VCHP</b> V-STEEL CONTAINER HANDLER PREMIUM .....	39	<b>RR</b> ROAD ROLLER .....	43

# TABLE OF CONTENTS CONTINUED



<b>MACHINE SUMMARY</b> RADIAL, BIAS, SPECIALTY .....	45	<b>SPECIFICATION CODES</b> .....	45
<b>MACHINE SUMMARY</b> COMPACT .....	45	<b>CONVERSION CHART</b> STAR RATING TO PLY RATING .....	46

## | RADIAL TIRES

<b>VERSABUILT AT</b> VERSABUILT ALL TRACTION .....	47	<b>VERSABUILT DT</b> VERSABUILT DEEP TREAD .....	48
<b>VERSABUILT AP</b> VERSABUILT ALL PURPOSE .....	47		

## | BIAS TIRES

<b>SGG</b> SUPER GROUND GRIP .....	50	<b>DURALOAD SDT</b> DURALOAD SUPER DEEP TREAD .....	55
<b>SRG</b> SUPER ROCK GRIP .....	51	<b>SDT LD</b> SUPER DEEP TREAD LOADER DOZER .....	56
<b>SRG LD</b> SUPER ROCK GRIP LOADER DOZER .....	52	<b>DURALOAD PT</b> DURALOAD PLAIN TREAD .....	57
<b>SRG DT</b> SUPER ROCK GRIP DEEP TREAD .....	53	<b>HTLD</b> HALF TREAD LOADER DOZER .....	57
<b>DURALOAD DT</b> DURALOAD DEEP TREAD .....	54	<b>PTLD</b> PLAIN TREAD LOADER DOZER .....	58
<b>SRG DT LD</b> SUPER ROCK GRIP DEEP TREAD LOADER DOZER .....	54	<b>PTLD UMS</b> PLAIN TREAD LOADER DOZER UNDERGROUND MINING SERVICE... ..	58
<b>SRG DT RB</b> SUPER ROCK GRIP DEEP TREAD ROAD BUILDER .....	55		

## | SPECIALTY TIRES

<b>DURAFORCE MH</b> DURAFORCE MATERIAL HANDLER .....	60	<b>SRG DT IDU</b> SUPER ROCK GRIP DEEP TREAD .....	62
<b>PTLD IDU</b> PLAIN TREAD LOADER DOZER .....	60	<b>SRG DT LD IDU</b> SUPER ROCK GRIP DEEP TREAD LOADER DOZER .....	62
<b>SRG IDU</b> SUPER ROCK GRIP .....	61	<b>SAND CHAMPION</b> .....	63
<b>PT IDU</b> PLAIN TREAD .....	61	<b>DURAFORCE AP</b> DURAFORCE ASPHALT PAVER .....	63

## | COMPACT TIRES

<b>ALL TRACTION UTILITY</b> I-3 .....	65	<b>DURAFORCE HD</b> DURAFORCE HEAVY DUTY .....	68
<b>ALL TRACTION UTILITY</b> R-4 / RADIAL .....	65	<b>DURAFORCE DT</b> DURAFORCE DEEP TREAD .....	69
<b>ALL TRACTION UTILITY</b> R-4 / BIAS .....	66	<b>DURAFORCE SDT</b> DURAFORCE SUPER DEEP TREAD .....	70
<b>DURAFORCE RT</b> DURAFORCE RADIAL TRACTION .....	67	<b>DURAFORCE ND</b> DURAFORCE NON-DIRECTIONAL .....	71
<b>INDUSTRIAL SPECIAL</b> F-3 .....	67	<b>SUPER TRACTION DUPLEX</b> .....	71
<b>SUPER TRACTION LOADER</b> .....	68	<b>DURAFORCE UTILITY</b> .....	72

**LIMITED WARRANTY** .....

73

**LIMITED WARRANTY** .....

74 - 76

# MACHINE SUMMARY RADIAL, BIAS, SPECIALTY



	TRACTION	ROCK	ROCK DEEP	ROCK EXTRA DEEP	ROCK EXTRA DEEP SMOOTH	INDUSTRIAL & OTHER
<b>DUMP TRUCK RIGID</b>	VFT VHS	MASTERCORE VRF VMT	MASTERCORE VRPS MASTERCORE VREV MASTERCORE VRWP MASTERCORE VZTB RLS VELS VELSL VMTS VRDP VREP VRLS VRQP VZTS			
<b>DUMP TRUCK ARTICULATED</b>	VKT	VLT VMT	VLTS			
<b>GRADER</b>	VKT VSW VSWAS VUT					
<b>LOADER DOZER</b>	FG VKT VSW VUT	RL VJT VL2 VLT VMT VTS	RLS VLTS VSNL VSNT	DL VSDL VSDR VSDT	STMS VSMS VSMS2	
<b>SCRAPER</b>	VKT VUT	VLT VRL				
<b>UNDERGROUND</b>			VSNL VSNT	VSDL VSDT VMDL	STMS VSDR VSMS VSMS2	
<b>CONTAINER HANDLER &amp; INDUSTRIAL MACHINES</b>						ELS2 RL STMS VCH VCHD VCHR VCHS VRLS VSMS
<b>CRANE</b>						VHS VGT VHS2 VSW
<b>OTHER</b>	FG VUT	RL	VRLS			RR VGT VHS VSB VSDL VSJ

## SPECIFICATION CODES



Each Bridgestone and Firestone Off-The-Road tire has its own specification code that enables the customer to properly identify and match the tire that best meets the conditions under which the tire will be used.

SERVICE	COMPOUND	EXAMPLE	E3A = Earthmover & Heat Resistant
E: Earthmover D: Loader & Dozer G: Grader L: Subterranean	1A: Standard 2S: Cut Resistant 3A: Heat Resistant	<b>NOTE</b>	DE2 = COMBINED D2A & E2A
		<b>ADDITIONAL COMPOUND CONSTRUCTION COMMENTS</b>	IDU = Industrial LS = Special Cut Resistance N/A = Not Applicable LAC = Load and Carry DAL = Dig and Load NY = Nylon NS = Nylon Steel

# METRIC SIZE CONVERSION CHART



METRIC SIZE	EQUIVALENT SIZE	OPTIONAL SIZE
385/95R24	14.00R24	
385/95R25	14.00R25	
445/80R25	17.5R25	
445/95R25	16.00R25	
525/80R25	20.5R25	
550/65R25	N/A	20.5R25

METRIC SIZE	EQUIVALENT SIZE	OPTIONAL SIZE
600/65R25	N/A	23.5R25
650/65R25	N/A	23.5R25
750/65R25	30/65R25	
775/65R29	N/A	26.5R25
875/65R29	N/A	29.5R25

# CONVERSION CHART [STAR RATING TO PLY RATING]



	TIRE SIZE	STAR RATING	CORRESPONDING PLY RATING
<b>GRADER</b>	14.00R24	1★	up to 16
	16.00R24	1★	up to 16
	17.5R25	1★	up to 16
<b>EARTHMOVER</b>	12.00R24	3★	up to 24
	14.00R24	3★	up to 32
	14.00R25	3★	up to 32
	16.00R25	2★	up to 36
	18.00R25	1★	up to 24
		2★	up to 36
	18.00R33	2★	up to 40
	21.00R33	2★	up to 36
	21.00R35	2★	up to 44
	24.00R35	2★	up to 48
	24.00R49	2★	up to 48
	27.00R49	2★	up to 54
	30.00R51	2★	up to 58
	33.00R51	2★	up to 64
	36.00R51	2★	up to 66
	40.00R57	2★	up to 74
	17.5R25	1★	up to 16
	20.5R25	1★	up to 24
		2★	up to 28
	25/65R25	2★	up to 32
	23.5R25	1★	up to 24
		2★	up to 32
	26.5R25	2★	up to 32
	29.5R25	2★	up to 34
	29.5R29	2★	up to 40
	33.25R29	2★	up to 44
	33.5R33	2★	up to 44
37.5R33	2★	up to 48	
33.25R35	2★	up to 44	
37.25R35	2★	up to 48	
37.5R39	2★	up to 52	
40.5/75R39	2★	up to 54	



The background of the entire image is a dark gray topographic map with white contour lines. The lines are irregular and wavy, creating a complex, organic pattern. A solid black horizontal band runs across the middle of the image, containing the text.

**BRIDGESTONE** **MASTERCORE**



**BRIDGESTONE MASTERCORE VRF**

**E-3 RADIAL**

**V-STEEL ROCK FAST**

- Unique Tread Compound: Provides a cooler running tire at higher speeds
- Optimized Tread Pattern: Provides longer and more even wear thanks to its innovative lug arrangement
- Proprietary Casing: Comprised of new compounds and a revolutionary steel cord with new anti-rust and adhesion coatings

CATEGORY	SIZE	PLY/ STAR RATING	COMPOUND/ CONSTRUCTION	TRA/ APPLICATION	ARTICLE #	AVERAGE WEIGHT (LBS)	OTD (32nd)	OVERALL DIAMETER (IN)	OVERALL WIDTH (IN)
<b>GIANT TUBELESS</b>	59/80R63	2★	E3A	E-3	11401	11,369	89	158.3	57.4



**BRIDGESTONE MASTERCORE VRPS**

**E-4 RADIAL**

**V-STEEL ROCK PREMIUM SERVICE**

- Narrow Grooves: High resistance to wear and cutting for extra-heavy-duty mining performance
- Wide Shoulder Grooves: Provides traction in multiple mining conditions
- Proprietary Casing: Comprised of new compounds and a revolutionary steel cord with new anti-rust and adhesion coatings

CATEGORY	SIZE	PLY/ STAR RATING	COMPOUND/ CONSTRUCTION	TRA/ APPLICATION	ARTICLE #	AVERAGE WEIGHT (LBS)	OTD (32nd)	OVERALL DIAMETER (IN)	OVERALL WIDTH (IN)
<b>GIANT TUBELESS</b>	59/80R63	2★	E1A	E-4	11614	12,621	146	158.1	57.8
	59/80R63	2★	E2A	E-4	11615	12,687	146	158.1	57.8
	59/80R63	2★	E3A	E-4	11617	12,595	146	158.1	57.8





**BRIDGESTONE MASTERCORE**

# VREV

E-4

RADIAL

## V-STEEL ROCK EXTRA V-OPERATION

- Slope and Shoulder Grooves: Set at a depth that minimizes heat generation to allow for maximum workload
- Buttress Fins: Use the flow of air from a rolling tire to force cooler air into the shoulder grooves and across the base of the tire voids in order to draw heat away
- Innovative Pattern: Significant improvement in wear and heat resistance compared to a standard Bridgestone VRPS
- Proprietary Casing: Comprised of new compounds and a revolutionary steel cord with new anti-rust and adhesion coatings

CATEGORY	SIZE	PLY/ STAR RATING	COMPOUND/ CONSTRUCTION	TRA/ APPLICATION	ARTICLE #	AVERAGE WEIGHT (LBS)	OTD (32nd)	OVERALL DIAMETER (IN)	OVERALL WIDTH (IN)
<b>GIANT TUBELESS</b>	53/80R63	2★	E1A	E-4	12315	10,937	139	150.2	51.6
	53/80R63	2★	E2A	E-4	12316	11,010	139	150.2	51.6
	53/80R63	2★	E3A	E-4	12317	10,911	139	150.2	51.6
	59/80R63	2★	E1A	E-4	1126	12,932	148	158.3	57.8
	59/80R63	2★	E2A	E-4	1268	13,025	148	158.3	57.8
	59/80R63	2★	E3A	E-4	4739	12,897	148	158.3	57.8



**BRIDGESTONE MASTERCORE**

# VRWP

E-4

RADIAL

## V-STEEL ROCK WEAR PREMIUM

- W Block Design: New tread pattern designed to provide higher wear resistance
- Additional Grooves: Additional grooves reduce pattern strain and provide additional heat reduction
- Curved Grooves: Maximize the W block effect to provide additional resistance to wear
- Proprietary Casing for the Future: Comprised of a new rubber compound and a revolutionary approach to steel cord, with anti-rust and adhesion coating

CATEGORY	SIZE	PLY/ STAR RATING	COMPOUND/ CONSTRUCTION	TRA/ APPLICATION	ARTICLE #	AVERAGE WEIGHT (LBS)	OTD (32nd)	OVERALL DIAMETER (IN)	OVERALL WIDTH (IN)
<b>GIANT TUBELESS</b>	46/90R57	2★	E1A	E-4	11482	8,704	122	141.1	45.1
	46/90R57	2★	E2A	E-4	11483	8,757	122	141.1	45.1
	46/90R57	2★	E3A	E-4	11484	8,684	122	141.1	45.1



**BRIDGESTONE** **MASTERCORE** **VZTB**

**E-4** **RADIAL**

**V-STEEL Z-TRACTION  
BEYOND**

- Optimized Shoulder Gauge: Improved belt durability
- Full Width Grooves: Aid traction and increased material ejection for superior grip
- Open Groove Areas: Provides maximum traction and increased airflow, thus reducing temperature and extending life
- Proprietary Casing: Comprised of new compounds and a revolutionary steel cord with new anti-rust and adhesion coatings

CATEGORY	SIZE	PLY/ STAR RATING	COMPOUND/ CONSTRUCTION	TRA/ APPLICATION	ARTICLE #	AVERAGE WEIGHT (LBS)	OTD (32nd)	OVERALL DIAMETER (IN)	OVERALL WIDTH (IN)
<b>GIANT TUBELESS</b>	46/90R57	2★	E1A	E-4	11397	8,251	115	140.9	45.1
	46/90R57	2★	E2A	E-4	11396	8,296	115	140.9	45.1
	46/90R57	2★	E3A	E-4	11399	8,232	115	140.9	45.1



# RADIAL TIRES



## VFT

E-2

RADIAL

### V-STEEL F-TRACTION

- Non-directional tread pattern
- Excellent flotation and traction in soft soil or mud
- Provides good traction, generates low heat and assures long tread life

CATEGORY	SIZE	PLY/ STAR RATING	COMPOUND/ CONSTRUCTION	TRA/ APPLICATION	ARTICLE #	AVERAGE WEIGHT (LBS)	OTD (32nd)	OVERALL DIAMETER (IN)	OVERALL WIDTH (IN)
LARGE TUBELESS	18.00R33	2★	E3A	E-2	418927	750	38	71.3	19.7
	27.00R49	2★	E3A	E-2	420077	2,519	56	104.2	29.5



SNOW SERVICE

## VSWAS

G-2

RADIAL

### V-STEEL SNOW WEDGE ALL SEASON

- Excellent performance in deeper snow, minimizing the need for chains
- Specially designed to minimize stone retention and stone throw
- Designed for year-round use and very capable in gravel and soft, sandy conditions
- Cut-resistant compound contributes to long service life

CATEGORY	SIZE	PLY/ STAR RATING	COMPOUND/ CONSTRUCTION	TRA/ APPLICATION	ARTICLE #	AVERAGE WEIGHT (LBS)	OTD (32nd)	OVERALL DIAMETER (IN)	OVERALL WIDTH (IN)
SMALL TUBELESS	14.00R24	1★	G2A	G-2	5536	302	28	53	15
	17.5R25	1★	DG2	G2/L2	4682	327	31	52.9	17.2
	20.5R25	1★	DG2	G2/L2	5537	455	36	58	21
	23.5R25	1★	DG2	G2/L2	12378	710	40	62.9	24



# VSW

**E-2, G-2, L-2** | **RADIAL**

## V-STEEL SNOW WEDGE

- Excellent performance in packed snow or ice
- High-traction tread design for machines used in snow service
- Studs or chains not required
- Heat-resistant compounding for high-speed use

CATEGORY	SIZE	LI / SS	COMPOUND/ CONSTRUCTION	TRA/ APPLICATION	ARTICLE #	AVERAGE WEIGHT (LBS)	OTD (32nd)	OVERALL DIAMETER (IN)	OVERALL WIDTH (IN)
<b>SMALL TUBELESS</b>	14.00R24 ‡	1★	DG2	G2/L2	293970	331	30	53.2	14.6
	16.00R24 ‡	1★	G2A	G-2	293997	458	28	58.5	16.4
	385/95R25 **	170 / E †	N/A MC	N/A MC	425078	370	30	53.3	15.5
	17.5R25	1★	DG2	G2/L2	420387	382	34	52.8	17.3
	20.5R25	MS	DE2	E2/L2	422851	527	37	57.9	20.9
	23.5R25	MS	DE2	E2/L2	423750	739	40	62.8	24.4
	600/65R25	1★	D2A	L-2	431742	615	40	56	23.6

‡ = For use on semi drop center rim only; not for use on flat base rim  
 \*\* = Mobile crane use; U.S. DOT approved for On-Highway use  
 † = LI/SS



# VKT

E-2, G-2, L-2

RADIAL

## V-STEEL K-TRACTION

- Directional tread pattern
- Cut-resistant tread design for even wear
- Excellent traction and flotation
- Ideal for soft or muddy surfaces

CATEGORY	SIZE	PLY/ STAR RATING	COMPOUND/ CONSTRUCTION	TRA/ APPLICATION	ARTICLE #	AVERAGE WEIGHT (LBS)	OTD (32nd)	OVERALL DIAMETER (IN)	OVERALL WIDTH (IN)
SMALL TUBELESS	14.00R24 ‡	1★	G2A	G-2	263354	307	32	53.2	14.6
	14.00R24 ‡	3★	E2A	E-2	263346	336	32	53.2	15.4
	16.00R24 ‡	1★	G2A	G-2	284971	433	36	58.0	16.5
	17.5R25	1★	EG2	E2/G2	296341	319	34	52.7	17.3
	17.5R25	1★	D2A	L-2	263389	364	34	57.9	17.3
	20.5R25	1★	D2A	L-2	263397	478	38	57.9	20.9
	23.5R25	2★	E1A	E-2	261351	655	42	63.1	24.1
	23.5R25	1★	D2A	L-2	263400	695	42	63.1	24.1
	26.5R25	2★	E1A	E-2	275638	864	49	68.2	26.7
	26.5R25	1★	D2A	L-2	275611	995	49	68.2	26.7
LARGE TUBELESS	29.5R29	2★	E2A	E-2	276235	1,254	55	77.1	30.1
	37.5R39	2★	E1A	E-2	419915	2,661	64	99.4	38.7

‡ = For use on semi drop center rim only; not for use on flat base rim





# VUT

E-2, G-2, L-2

RADIAL

## V-STEEL ULTRA TRACTION

- Non-directional tread pattern
- Self-cleaning tread design
- Exceptional traction and flotation
- Lighter weight provides superior maneuverability and fuel consumption

CATEGORY	SIZE	PLY/ STAR RATING	COMPOUND/ CONSTRUCTION	TRA/ APPLICATION	ARTICLE #	AVERAGE WEIGHT (LBS)	OTD (32nd)	OVERALL DIAMETER (IN)	OVERALL WIDTH (IN)
SMALL TUBELESS	335/80R20	1★	DE2	E2/L2	425095	120	24	40.8	12.6
	365/80R20	1★	DE2	E2/L2	424757	140	26	42.8	13.7
	405/70R20	1★	DE2	E2/L2	425469	160	25	43.0	15.7
	13.00R24 +	1★	G2A	G-2	299804	231	32	50.8	14.1
	14.00R24	1★	G2A	G-2	293954	277	32	53.3	15.5
	15.5R25	2★ ‡	DG2	G2/L2	424609	245	34	50.0	15.1
	17.5R25	1★	DG2	G2/L2	422827	296	35	52.8	17.5
	20.5R25	1★	DG2	G2/L2	420344	394	39	58.0	21.0
	23.5R25	1★	DG2	G2/L2	422703	688	42	63.0	24.4

‡ = In 15.5R25 size, tire is rated 1\* for Graders and 2\* for Loaders



## VRL

E-3

RADIAL

### V-STEEL R-LUG

- Rock service pattern
- Durable-casing design resists fatigue
- Tough lug pattern for excellent traction and cut resistance
- Suitable for rocky or gravel surfaces in mines, quarries and construction sites

CATEGORY	SIZE	PLY/ STAR RATING	COMPOUND/ CONSTRUCTION	TRA/ APPLICATION	ARTICLE #	AVERAGE WEIGHT (LBS)	OTD (32nd)	OVERALL DIAMETER (IN)	OVERALL WIDTH (IN)
<b>LARGE TUBELESS</b>	29.5R35	2★	E1A	E-3	419591	1,612	50	83.5	30.2
	33.25R35	2★	E1A	E-3	418498	1,968	62	87.7	33.3
	40.5/75R39	2★	E1A	E-3	418501	3,012	61	101.9	39.4
	27.00R49	2★	E3A	E-3	418552	2,959	54	104.1	29.5



## VLT

E-3, L-3

RADIAL

### V-STEEL L-TRACTION

- Innovative tread lugs expand and compress to provide powerful traction and self-cleaning capability
- Large contact footprint provides excellent traction, flotation and rider comfort
- Solid performance and maneuverability on wet, soft or muddy surfaces

CATEGORY	SIZE	PLY/ STAR RATING	COMPOUND/ CONSTRUCTION	TRA/ APPLICATION	ARTICLE #	AVERAGE WEIGHT (LBS)	OTD (32nd)	OVERALL DIAMETER (IN)	OVERALL WIDTH (IN)
<b>SMALL TUBELESS</b>	23.5R25	MS	DE2	E3/L3	421960	799	54	63.9	24.3
	26.5R25	MS	DE2	E3/L3	421979	1,040	57	68.8	26.9
	750/65R25	MS	DE2	E3/L3	420220	1,024	54	64.0	30.1
<b>LARGE TUBELESS</b>	29.5R25	MS	DE2	E3/L3	421987	1,303	60	73.9	30.0
	33.25R29	2★	E2A	E-3	427645	1,830	68	81.7	34.0
	37.25R35	2★	E1A	E-3	427985	2,530	75	94.0	37.6
	37.25R35	2★	E2A	E-3	428002	2,654	75	94.0	37.6
	40.5/75R39	2★	E1A	E-3	428172	3,340	74	102.6	39.4
40.5/75R39	2★	E2A	E-3	428138	3,581	74	102.6	39.4	



# VMT

E-3, L-3

RADIAL

## V-STEEL M-TRACTION

- Non-directional tread pattern for even wear
- Normal depth tread features strong resistance to heat buildup
- Excellent traction in a variety of conditions

CATEGORY	SIZE	PLY/ STAR RATING	COMPOUND/ CONSTRUCTION	TRA/ APPLICATION	ARTICLE #	AVERAGE WEIGHT (LBS)	OTD (32nd)	OVERALL DIAMETER (IN)	OVERALL WIDTH (IN)
<b>SMALL TUBELESS</b>	17.5R25	2★	D2A	L-3	419346	376	38	52.7	17.3
	20.5R25	1★	D2A	L-3	418110	529	42	58.3	20.9
	20.5R25	2★	E1A	E-3	418161	514	42	58.3	20.9
	23.5R25	1★	D2A	L-3	418137	782	44	63.0	24.3
	23.5R25	2★	D2A	L-3	418773	722	44	63.0	24.3
	23.5R25	2★	E1A	E-3	418196	708	44	63.0	24.3
	26.5R25	1★	D2A	L-3	419672	1,033	48	68.3	26.9
	26.5R25	2★	E1A	E-3	419311	904	48	68.3	26.9
<b>LARGE TUBELESS</b>	29.5R25	1★	D2A	L-3	419680	1,261	53	73.4	30.0
	29.5R25	2★	E1A	E-3	419338	1,269	53	73.4	30.0
<b>GIANT TUBELESS</b>	30.00R51	2★	E3A	E-3	422207	3,551	57	112.2	33.6
	33.00R51	2★	E1A	E-3	422436	4,223	61	117.6	36.7
	33.00R51	2★	E3A	E-3	420689	4,222	61	117.6	36.7
	40.00R57	2★	E1A	E-3	427016	6,966	81	138.3	43.6
	40.00R57	2★	E2A	E-3	427050	6,966	81	138.3	43.6
	40.00R57	2★	E3A	E-3	427033	7,185	81	138.3	43.6



## VJT

L-3 RADIAL

### V-STEEL J-TRACTION

- Provides a smooth, stable ride across rugged environments while resisting cutting damage
- Unique vertical-column center tread blocks minimize vibration for operator comfort
- Double-reinforced tie bars reduce friction to help prevent irregular center block wear and extend tread wear
- Sidewall protectors enhance damage resistance

CATEGORY	SIZE	PLY/ STAR RATING	COMPOUND/ CONSTRUCTION	TRA/ APPLICATION	ARTICLE #	AVERAGE WEIGHT (LBS)	OTD (32nd)	OVERALL DIAMETER (IN)	OVERALL WIDTH (IN)
<b>SMALL TUBELESS</b>	17.5R25	1★	D2A	L-3	431538	366	38	53.2	17.4
	20.5R25	1★	DG2	L-3	3994	496	42	58.3	20.9
	23.5R25	1★	D2A	L-3	431198	729	44	63.0	24.3
	23.5R25	2★	D2A	L-3	6536	729	44	63.0	24.3
	26.5R25	1★	D2A	L-3	431215	1,003	48	68.4	26.9
<b>LARGE TUBELESS</b>	29.5R25	1★	D2A	L-3	431555	1,237	53	73.4	30.0
	29.5R25	2★	D2A	L-3	4071	1,260	53	73.4	30.0



## VTS

L-3 RADIAL

### V-STEEL TRACTION AND STABILITY

- Designed for stability and improved ride
- Stone rejectors reduce stone retention
- Self-cleaning tread design
- Designed primarily for wheeled loaders

CATEGORY	SIZE	PLY/ STAR RATING	COMPOUND/ CONSTRUCTION	TRA/ APPLICATION	ARTICLE #	AVERAGE WEIGHT (LBS)	OTD (32nd)	OVERALL DIAMETER (IN)	OVERALL WIDTH (IN)
<b>SMALL TUBELESS</b>	550/65R25	1★	D2A	L-3	429821	525	41	53.1	21.5
	650/65R25	1★	D2A	L-3	424099	678	47	59.1	25.3
	750/65R25	1★	D2A	L-3	429838	1,003	52	63.3	29.3
<b>LARGE TUBELESS</b>	775/65R29	1★	D2A	L-3	424277	1,158	54	68.5	30.5
	875/65R29	MS	DE2	E3/L3	431283	1,559	60	73.4	33.5



## VELS

E-4

RADIAL

### V-STEEL E-LUG S

- Deep non-directional rock tread and sidewall protection
- Special compounds provide exceptional wear and cut resistance
- Suited for abrasive roads, such as rocky, gravel or packed surfaces

CATEGORY	SIZE	PLY/ STAR RATING	COMPOUND/ CONSTRUCTION	TRA/ APPLICATION	ARTICLE #	AVERAGE WEIGHT (LBS)	OTD (32nd)	OVERALL DIAMETER (IN)	OVERALL WIDTH (IN)
<b>SMALL TUBELESS</b>	18.00R25	2★	E2A	E-4	419281	791	63	64.6	20.3
	18.00R33	2★	E2A LS	E-4	422177	960	61	73.1	20.2
<b>LARGE TUBELESS</b>	18.00R33	2★	E1A	E-4	275867	960	61	73.1	20.2
	18.00R33	2★	E2A	E-4	276316	959	61	73.1	20.2
	21.00R35	2★	E2A	E-4	276324	1,469	74	80.5	22.7



## VELSL

E-4

RADIAL

### V-STEEL E-LUG SL

- Strong resistance to heat buildup, cutting and chipping
- Suitable for large dump trucks engaged in earthmoving work

CATEGORY	SIZE	PLY / STAR RATING	COMPOUND/ CONSTRUCTION	TRA/ APPLICATION	ARTICLE #	AVERAGE WEIGHT (LBS)	OTD (32nd)	OVERALL DIAMETER (IN)	OVERALL WIDTH (IN)
<b>GIANT TUBELESS</b>	37.00R57	2★	E3A	E-4	424587	6,095	97	133.4	41.1



# VMTP

**E-4** | **RADIAL**

## V-STEEL M-TRACTION PREMIUM

- Premium deep tread delivers exceptional tread wear
- Excellent lateral and side traction performance
- Special compounds for exceptional wear and cut resistance
- Ideal for muddy surfaces

CATEGORY	SIZE	PLY/ STAR RATING	COMPOUND/ CONSTRUCTION	TRA/ APPLICATION	ARTICLE #	AVERAGE WEIGHT (LBS)	OTD (32nd)	OVERALL DIAMETER (IN)	OVERALL WIDTH (IN)
<b>LARGE TUBELESS</b>	18.00R33	2★	E1A	E-4	422746	967	69	73.6	20.3
	18.00R33	2★	E2A	E-4	423866	979	69	73.6	20.3
	18.00R33	2★	E2A LS	E-4	422754	979	69	73.6	20.3
	21.00R33	2★	E2A	E-4	428818	1,378	77	78.7	22.8
	21.00R35	2★	E1A	E-4	422770	1,400	77	80.6	22.7
	21.00R35	2★	E2A	E-4	422789	1,444	77	80.6	22.7
	24.00R35	2★	E1A	E-4	3542	1,831	86	86.0	26.0
	24.00R35	2★	E2A	E-4	422991	1,831	86	86.0	26.0
	24.00R35	2★	E2A LS	E-4	423009	1,828	86	86.0	26.0
	24.00R35	2★	E3A	E-4	3035	1,786	86	86.0	26.0
	27.00R49	2★	E1A	E-4	422479	2,978	92	106.3	29.5
	27.00R49	2★	E2A	E-4	422460	3,018	92	106.3	29.5
	27.00R49	2★	E2A LS	E-4	423106	3,001	92	106.3	29.5
	27.00R49	2★	E3A	E-4	422461	3,017	92	106.3	29.5
<b>GIANT TUBELESS</b>	33.00R51	2★	E1A	E-4	423084	4,940	113	120.6	36.7
	33.00R51	2★	E2A	E-4	423076	4,974	113	120.6	36.7
	33.00R51	2★	E2A LS	E-4	423041	4,946	113	120.6	36.7
	33.00R51	2★	E3A	E-4	3878	4,850	113	120.6	36.7





## VMTS

E-4

RADIAL

### V-STEEL M-TRACTION S

- Exceptional side-slip resistance
- Non-directional tread design ideal for muddy or soft surfaces
- Wear resistance for longer tread life
- Self-cleaning tread design

CATEGORY	SIZE	PLY/ STAR RATING	COMPOUND/ CONSTRUCTION	TRA/ APPLICATION	ARTICLE #	AVERAGE WEIGHT (LBS)	OTD (32nd)	OVERALL DIAMETER (IN)	OVERALL WIDTH (IN)
SMALL TUBELESS	14.00R25	3★	E3A	E-4	295213	402	48	55.4	15.4
	16.00R25	2★	E2A	E-4	422347	606	57	60.4	17.7
	18.00R25	2★	E2A	E-4	418323	752	64	65.1	19.9



## VRDP

E-4

RADIAL

### V-STEEL ROCK DEEP PREMIUM

- Extra-deep tread design extends tire tread life
- Increased air chamber capacity results in longer life and lower operating temperatures
- Extra-deep rock tread with sidewall protectors

CATEGORY	SIZE	PLY/ STAR RATING	COMPOUND/ CONSTRUCTION	TRA/ APPLICATION	ARTICLE #	AVERAGE WEIGHT (LBS)	OTD (32nd)	OVERALL DIAMETER (IN)	OVERALL WIDTH (IN)
GIANT TUBELESS	40.00R57	2★	E2A	E-4	425724	8,488	122	140.7	43.6
	42/90R57	2★	E1A	E-4	425282	7,181	122	136.1	41.7
	42/90R57	2★	E2A	E-4	425299	7,220	122	136.1	41.7
	42/90R57	2★	E2A LS	E-4	425316	7,181	122	136.1	41.7
	42/90R57	2★	E3A	E-4	425333	7,181	122	136.1	41.7



# VREP

**E-4** | **RADIAL**

## V-STEEL ROCK E-PREMIUM RADIAL

- Low heat generation
- Exceptional tread life
- Unique two-stage lug design for stability
- Suitable for 100-ton rigid dump trucks running at high speeds, which can cause extreme heat buildup inside the tire

CATEGORY	SIZE	PLY/ STAR RATING	COMPOUND/ CONSTRUCTION	TRA/ APPLICATION	ARTICLE #	AVERAGE WEIGHT (LBS)	OTD (32nd)	OVERALL DIAMETER (IN)	OVERALL WIDTH (IN)
<b>LARGE TUBELESS</b>	27.00R49	2★	E1A	E-4	431385	3,088	84	105.9	29.5
	27.00R49	2★	E2A	E-4	431402	3,060	84	105.9	29.5
	27.00R49	2★	E2A LS	E-4	431419	3,050	84	105.9	29.5
	27.00R49	2★	E3A	E-4	431368	3,039	84	105.9	29.5



# VRLS

E-4 RADIAL

## V-STEEL R-LUG S

- Unique non-directional rock-service tread pattern provides excellent traction
- Excellent haulage performance on rock, gravel or packed earth
- Special compounds provide excellent wear and cut resistance for long tread life
- Rock-deep tread for long life and sidewall protectors for additional protection

CATEGORY	SIZE	PLY/ STAR RATING	COMPOUND/ CONSTRUCTION	TRA/ APPLICATION	ARTICLE #	AVERAGE WEIGHT (LBS)	OTD (32nd)	OVERALL DIAMETER (IN)	OVERALL WIDTH (IN)
<b>SMALL TUBELESS</b>	14.00R25	3★	E2A	E-4	263419	427	49	55.2	15.4
	24.00R35	2★	E1A	E-4	275883	1,712	74	85.6	26.0
<b>LARGE TUBELESS</b>	24.00R35	2★	E2A	E-4	419141	1,732	74	85.6	26.0
	24.00R35	2★	E2A LS	E-4	422169	1,730	74	85.6	26.0
	27.00R49	2★	E1A	E-4	275905	2,989	84	105.8	29.5
	27.00R49	2★	E2A	E-4	276340	3,007	84	105.8	29.5
	27.00R49	2★	E2A LS	E-4	419648	2,990	84	105.8	29.5
	27.00R49	2★	E3A	E-4	420042	2,988	84	105.8	29.5
	30.00R51	2★	E3A	E-4	420603	3,851	94	114.6	33.6
<b>GIANT TUBELESS</b>	36.00R51	2★	E1A	E-4	421898	5,501	109	126.1	40.0
	36.00R51	2★	E2A	E-4	276367	5,533	109	126.1	40.0
	36.00R51	2★	E2A LS	E-4	419559	5,501	109	126.1	40.0
	36.00R51	2★	E3A	E-4	276405	5,499	109	126.1	40.0



# VRPS

E-4

RADIAL

## V-STEEL ROCK PREMIUM SERVICE

- Ultra-durable casing for extra-long tread life
- Low heat generation
- Recommended for use in copper, iron, gold, coal, and other mines that require extra protection against tire wear, cuts, and punctures

CATEGORY	SIZE	PLY/ STAR RATING	COMPOUND/ CONSTRUCTION	TRA/ APPLICATION	ARTICLE #	AVERAGE WEIGHT (LBS)	OTD (32nd)	OVERALL DIAMETER (IN)	OVERALL WIDTH (IN)
<b>GIANT TUBELESS</b>	33.00R51	2★	E1A	E-4	3798	5,181	110	120.6	36.7
	33.00R51	2★	E2A	E-4	3795	5,181	110	120.6	36.7
	33.00R51	2★	E2A LS	E-4	3796	5,181	110	120.6	36.7
	33.00R51	2★	E3A	E-4	3797	5,181	110	120.6	36.7
	53/80R63	2★	E1A	E-4	429379	10,600	139	150.7	51.3
	53/80R63	2★	E2A	E-4	429396	10,600	139	150.7	51.3
	53/80R63	2★	E3A	E-4	429413	10,699	139	150.7	51.3



## VRQP

E-4

RADIAL

### V-STEEL ROCK QUARRY PREMIUM

- Specially developed for mid-sized rigid dump trucks working in quarries and other tough operations
- Extra-deep tread for longer tire life
- Innovative tread design for improved traction
- Reinforced shoulder design for reduced sidewall damage

CATEGORY	SIZE	PLY/ STAR RATING	COMPOUND/ CONSTRUCTION	TRA/ APPLICATION	ARTICLE #	AVERAGE WEIGHT (LBS)	OTD (32nd)	OVERALL DIAMETER (IN)	OVERALL WIDTH (IN)
LARGE TUBELESS	18.00R33	2★	E2A	E-4	431504	1,080	81	74.4	20.3
	24.00R35	2★	E2A	E-4	431521	1,930	90	86.4	26.0
	24.00R35	2★	E2A LS	E-4	427900	1,933	90	86.4	26.0



## VZTS

E-4

RADIAL

### V-STEEL Z-TRACTION S

- Exceptional side-slip resistance
- Non-directional block design with side protectors ideal for muddy or soft conditions
- Special compounds provide exceptional wear and cut resistance
- Suitable for rocky surfaces

CATEGORY	SIZE	PLY/ STAR RATING	COMPOUND/ CONSTRUCTION	TRA/ APPLICATION	ARTICLE #	AVERAGE WEIGHT (LBS)	OTD (32nd)	OVERALL DIAMETER (IN)	OVERALL WIDTH (IN)
GIANT TUBELESS	37.00R57	2★	E1A	E-4	422681	6,646	110	134.7	41.1
	37.00R57	2★	E2A	E-4	422975	6,681	110	134.7	41.1
	37.00R57	2★	E2A LS	E-4	422800	6,647	110	134.7	41.1
	37.00R57	2★	E3A	E-4	422819	6,644	110	134.7	41.1
	40.00R57	2★	E1A	E-4	422037	8,059	115	141.1	44.9
	40.00R57	2★	E2A	E-4	422584	8,099	115	141.1	44.9
	40.00R57	2★	E3A	E-4	421324	8,058	115	141.1	44.9



## VLTS

E-4, L-4

RADIAL

### V-STEEL L-TRACTION S

- Excellent traction on rocky, gravel, and packed earth surfaces in mines, quarries, and construction sites
- Deep tread for extra-long tread life
- Self-cleaning tread design

CATEGORY	SIZE	PLY/ STAR RATING	COMPOUND/ CONSTRUCTION	TRA/ APPLICATION	ARTICLE #	AVERAGE WEIGHT (LBS)	OTD (32nd)	OVERALL DIAMETER (IN)	OVERALL WIDTH (IN)
SMALL TUBELESS	20.5R25	MS	DE2	E4/L4	424102	636	62	58.2	20.9
	23.5R25	MS	DE2	E4/L4	422738	875	68	63.6	24.1
	26.5R25	2*	E2A	E-4	422711	1,130	76	68.3	26.7
	750/65R25	2*	E2A	E-4	427560	1,080	69	63.9	30.1
	29.5R25	2*	E2A	E-4	422916	1,470	82	73.4	30.0
LARGE TUBELESS	875/65R29	MS	DE2	E4/L4	000470	1,551	76	74.0	33.8
	33.25R29	2*	E2A	E-4	011031	1,922	87	82.4	33.6



## VSNT

E-4, L-4

RADIAL

### V-STEEL N-TRACTION

- Deep tread resists cuts and impacts
- Designed for excellent traction in moderate to severe conditions without compromising tread life
- Radial multiple-star construction for heavy-duty performance

CATEGORY	SIZE	PLY/ STAR RATING	COMPOUND/ CONSTRUCTION	TRA/ APPLICATION	ARTICLE #	AVERAGE WEIGHT (LBS)	OTD (32nd)	OVERALL DIAMETER (IN)	OVERALL WIDTH (IN)
SMALL TUBELESS	26.5R25	MS	DE2	E4/L4	423971	1,234	72	70.0	27.0
LARGE TUBELESS	29.5R25	MS	DE2	E4/L4	424196	1,589	76	75.0	30.2
	29.5R29	2*	D2A	L-4	3991	1,695	75	78.7	30.5
	35/65R33	MT	DUH	E4/L4	3789	2,332	79	81.7	35.6





# VSNL

L-4 RADIAL

## V-STEEL N-LUG

- Excellent performance in severe rock applications
- Durable, heavy-duty casing
- Multipurpose loader operations
- Rock-pattern design offers outstanding traction, stability and comfort
- Sidewall protection reduces cuts and other damage
- Good for load-and-carry operations (consult your Bridgestone representative)

CATEGORY	SIZE	PLY/ STAR RATING	COMPOUND/ CONSTRUCTION	TRA/ APPLICATION	ARTICLE #	AVERAGE WEIGHT (LBS)	OTD (32nd)	OVERALL DIAMETER (IN)	OVERALL WIDTH (IN)
<b>SMALL TUBE TYPE</b>	14.00R20	2★	D2A	L-4	157376	361	43	47.1	14.2
<b>LARGE TUBELESS</b>	35/65R33	2★	D2A	L-4	429277	2,281	79	81.7	34.6
<b>GIANT TUBELESS</b>	45/65R45	2★	D2A	L-4	429855	4,825	95	107.5	44.2



# VSDL

L-5

RADIAL

## V-STEEL D-LUG

- Extra-deep tread and shoulder protection offer cut and impact resistance, stability, and ride comfort
- Excellent traction in severe or rocky conditions
- Designed for extra-heavy-duty loader performance

CATEGORY	SIZE	PLY/ STAR RATING	COMPOUND/ CONSTRUCTION	TRA/ APPLICATION	ARTICLE #	AVERAGE WEIGHT (LBS)	OTD (32nd)	OVERALL DIAMETER (IN)	OVERALL WIDTH (IN)
<b>SMALL TUBE TYPE</b>	8.25R15	2★	D2A	L-5	424544	158	60	34.6	9.8
	10.00R15	2★	D2A	L-5	157384	182	60	35.6	11.3
	12.00R20	2★	D2A	L-5	157392	325	72	46.0	12.6
<b>SMALL TUBELESS</b>	14.5R15	2★	D2A	L-5	152455	212	60	35.4	14.1
	17.5R25	1★	D2A	L-5	423165	585	86	55.1	17.3
	20.5R25	1★	D2A	L-5	421855	881	99	61.1	20.9
	23.5R25	1★	D2A	L-5	420565	1,175	110	65.8	24.1
	23.5R25	2★	D2A	L-5	422428	1,162	110	65.8	24.1
	26.5R25	1★	D2A	L-5	420573	1,582	120	70.5	26.9
	26.5R25	2★	D2A	L-5	421332	1,594	120	70.5	26.9
	29.5R25	1★	D2A	L-5	420581	2,007	131	75.8	30.2
<b>LARGE TUBELESS</b>	29.5R25	2★	D2A	L-5	423432	2,045	131	75.8	30.2
	29.5R29	2★	D2A	L-5	421758	2,159	132	79.1	30.6
	33/65R29	2★	D2A	L-5	011334	2,145	114	75.9	33.2
	35/65R33	2★	D2A	L-5	425010	2,720	120	81.7	34.6
	35/65R33	2★	IDU	L-5	429872	2,720	120	81.7	36.6
	45/65R39	1★	D2A	L-5	423378	4,848	146	101.6	42.3
	45/65R39	1★	D2A LS	L-5	423386	4,842	146	101.6	42.3
	45/65R45	2★	D2A DAL	L-5	426047	5,492	141	107.5	44.2
<b>GIANT TUBELESS</b>	45/65R45	2★	D2A LAC	L-5	422843	5,484	141	107.5	44.2
	45/65R45	3★	D2A LAC	L-5	011370	5,492	141	107.5	44.2
	50/65R51	2★	D2A	L-5	428053	7,992	161	120.9	50.3
	55.5/80R57	2★	D2A	L-5	422568	13,544	158	147.2	54.9
	60/80R57	2★	D2A	L-5	430229	15,200	149	155.6	58.7



# VSDR

L-5

RADIAL

## V-STEEL SUPER DEEP RADIAL

- Premium rigid pattern with extra-long wear life
- Improved cut resistance
- Specially designed for loaders and dozers
- Ideal for extremely rocky surfaces such as underground mining, open pits, quarries and waste operations

CATEGORY	SIZE	PLY/ STAR RATING	COMPOUND/ CONSTRUCTION	TRA/ APPLICATION	ARTICLE #	AVERAGE WEIGHT (LBS)	OTD (32nd)	OVERALL DIAMETER (IN)	OVERALL WIDTH (IN)
<b>SMALL TUBELESS</b>	20.5R25	1★	D2A	L-5	000996	862	98	61.1	20.9
	20.5R25	2★	D2A	L-5	000997	871	98	61.1	20.9



# VSDT

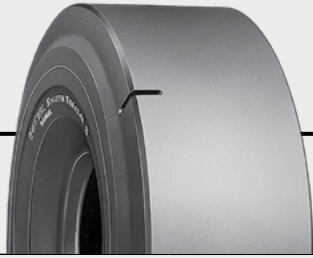
L-5

RADIAL

## V-STEEL SUPER DEEP TRACTION

- Excellent traction on moderate to severe conditions
- Extra-heavy-duty 1\* and 2\* radial casing designs
- Extra-deep tread for excellent traction, comfortable ride, superior cut resistance and long tread life
- Wide tread helps minimize sidewall cuts

CATEGORY	SIZE	PLY/ STAR RATING	COMPOUND/ CONSTRUCTION	TRA/ APPLICATION	ARTICLE #	AVERAGE WEIGHT (LBS)	OTD (32nd)	OVERALL DIAMETER (IN)	OVERALL WIDTH (IN)
<b>SMALL TUBELESS</b>	23.5R25	1★	D2A	L-5	423548	1,135	100	65.4	24.4
	26.5R25	1★	D2A	L-5	423955	1,494	111	69.9	27.4
<b>LARGE TUBELESS</b>	29.5R25	2★	D2A	L-5	424145	1,902	121	74.9	30.7
	29.5R29	2★	D2A	L-5	424420	1,956	121	78.3	30.7
	35/65R33	2★	D2A	L-5	002111	2,747	121	81.7	35.0



## VSMS

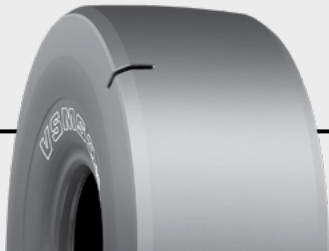
L-5S

RADIAL

### V-STEEL SMOOTH TREAD MINE SERVICE

- Maximum cut and wear resistance
- Extra-deep tread for severe conditions
- Extra-heavy-duty 2\* radial casing design
- Reinforced all-steel radial casing

CATEGORY	SIZE	PLY/ STAR RATING	COMPOUND/ CONSTRUCTION	TRA/ APPLICATION	ARTICLE #	AVERAGE WEIGHT (LBS)	OTD (32nd)	OVERALL DIAMETER (IN)	OVERALL WIDTH (IN)
<b>SMALL TUBE TYPE</b>	9.00R20	2*	D2A	L-5S	150908	236	64	41.5	10.2
	12.00R20	2*	D2A	L-5S	150916	351	72	46.2	12.3
	12.00R24	2*	D2A	L-5S	150924	410	72	50.2	12.3
	14.00R24	2*	D2A	L-5S	211240	603	91	54.8	15.4
<b>SMALL TUBELESS</b>	18.00R25	2*	D2A	L-5S	422282	1,092	106	65.9	20.2



## VSMS2

L-5S

RADIAL

### V-STEEL SMOOTH TREAD MINE SERVICE 2

- Extra-deep tread for severe conditions
- Extra-heavy-duty 2\* radial casing design
- Sidewall design improves cut resistance by 30% and service life by 5% compared to Bridgestone VSMS, which also helps lower operating cost

CATEGORY	SIZE	PLY/ STAR RATING	COMPOUND/ CONSTRUCTION	TRA/ APPLICATION	ARTICLE #	AVERAGE WEIGHT (LBS)	OTD (32nd)	OVERALL DIAMETER (IN)	OVERALL WIDTH (IN)
<b>SMALL TUBELESS</b>	17.5R25	2*	D2A	L-5S	4724	642	86	54	18
	26.5R25	2*	L2A	L-5S	11426	1,778	120	69.9	27.7
	26.5R25	2*	D2A	L-5S	4604	1,777	120	69.9	27.7
<b>LARGE TUBELESS</b>	29.5R25	2*	D2A	L-5S	6392	2,405	131	75.1	31.1
	29.5R29	2*	D2A	L-5S	4605	2,449	132	79.1	31.2
	29.5R29	2*	L2A	L-5S	12356	2,499	132	79.0	31.2



# VMDL

L-5 | RADIAL

## V-STEEL MINING D-LUG

- Optimized Belt and Enhanced Bead Cord Structure: Allows for increased load capacity equal to 3-star rating at 2-star rating air pressure for optimal performance.
- Extra Deep Tread: Offers excellent traction, stability and a comfortable ride on severe rocky surfaces.
- Special Sidewall Design: Provides extended protection from cutting.

CATEGORY	SIZE	PLY/ STAR RATING	COMPOUND/ CONSTRUCTION	TRA/ APPLICATION	ARTICLE #	AVERAGE WEIGHT (LBS)	OTD (32nd)	OVERALL DIAMETER (IN)	OVERALL WIDTH (IN)
<b>SMALL TUBE TYPE</b>	26.5R25	2★	L2A	L-5	12923	1,634	120	70.3	27



**BIAS TIRES**





EXCAVATOR

# FG

L-2

BIAS

## FAST GRIP

- Self-cleaning tread design
- Directional long service tread
- Exceptional flotation and traction on soft soil or mud

CATEGORY	SIZE	PLY/ STAR RATING	COMPOUND/ CONSTRUCTION	TRA/ APPLICATION	ARTICLE #	AVERAGE WEIGHT (LBS)	OTD (32nd)	OVERALL DIAMETER (IN)	OVERALL WIDTH (IN)
<b>SMALL TUBELESS</b>	12.5 / 70-16	8	D2A	L-2	298433	80	26	33.9	12.6
	15.5 / 60-18	8	-	L-2	290416	90	27	36.7	15.4
	10.00-20	16	D2A	L-2	211233	100	23	41.6	10.9
	11.00-20	16	-	L-2	153524	123	31	43.3	11.8



EXCAVATOR

# RL

E-3, L-3

BIAS

## R-LUG

- Non-directional pattern for outstanding rough terrain traction
- Special compounds to resist cutting
- Exceptional cut resistance
- Designed for operating on rock, coal and earth surfaces

CATEGORY	SIZE	PLY/ STAR RATING	COMPOUND/ CONSTRUCTION	TRA/ APPLICATION	ARTICLE #	AVERAGE WEIGHT (LBS)	OTD (32nd)	OVERALL DIAMETER (IN)	OVERALL WIDTH (IN)
<b>SMALL TUBE TYPE</b>	12.00-20	18	E1A	E-3	285366	166	32	44.8	12.4
	14.00-24	28	E2A	E-3	296295	310	35	53.3	15.2
<b>SMALL TUBELESS</b>	17.5-25	16	D2A	L-3	425605	268	37	52.9	17.1



## VL2

E-3, L-3

BIAS

### V-LUG 2

- Built with a specially compounded rubber to resist cutting and wearing, as well as overheating
- Designed for operating on rock, coal and earth surfaces
- Improved durability and low vibration

CATEGORY	SIZE	PLY/ STAR RATING	COMPOUND/ CONSTRUCTION	TRA/ APPLICATION	ARTICLE #	AVERAGE WEIGHT (LBS)	OTD (32nd)	OVERALL DIAMETER (IN)	OVERALL WIDTH (IN)
<b>SMALL TUBELESS</b>	17.5-25	16	D2A	L-3	3791	278	38	53.1	17.5
	20.5-25	16	D2A	L-3	3790	403	42	58.3	21.3
	23.5-25	20	D2A	L-3	5309	642	54	63.3	24.3
	26.5-25	20	DE2	E3/L3	3553	807	55	68.4	26.9



## RLS

E-4, L-4

BIAS

### R-LUG S

- Deep non-directional tread pattern
- Special compounds to resist cutting
- Excellent self-cleaning tread design
- Designed for operating on rock, coal, and earth surfaces where serviceability and tread cutting are problematic

CATEGORY	SIZE	PLY/ STAR RATING	COMPOUND/ CONSTRUCTION	TRA/ APPLICATION	ARTICLE #	AVERAGE WEIGHT (LBS)	OTD (32nd)	OVERALL DIAMETER (IN)	OVERALL WIDTH (IN)
<b>SMALL TUBELESS</b>	26.5-25	26	D2A	L-4	3551	1,068	84	70.3	27.6
<b>LARGE TUBELESS</b>	29.5-25	28	D2A	L-4	275328	1,432	94	75.3	30.9
	24.00-35	42	E2A	E-4	276057	1,640	83	86.6	25.8



# DL

L-5

BIAS

## D-LUG

- Extra-deep tread and rugged casing for rough terrain
- Exceptional cut and impact resistance
- Extra-deep, specially compounded rubber and shoulder ribs ensure maximum serviceability, excellent traction and stability
- Designed for severe rocky surfaces

CATEGORY	SIZE	PLY/ STAR RATING	COMPOUND/ CONSTRUCTION	TRA/ APPLICATION	ARTICLE #	AVERAGE WEIGHT (LBS)	OTD (32nd)	OVERALL DIAMETER (IN)	OVERALL WIDTH (IN)
<b>LARGE TUBELESS</b>	29.5-25	28	D2A	L-5	423408	1,856	133	74.8	30.2
	35/65-33	42	D2V	L-5	422150	2,930	122	81.7	35.3
<b>GIANT TUBELESS</b>	45/65-45	58	D2V	L-5	419400	5,933	146	107.5	45.1
	50/65-51	62	D2A NY	L-5	429515	7,879	161	120.9	49.6
	50/65-51	62	D2V NS	L-5	417971	8,436	161	120.9	49.6
	65/65-57	62	D2V	L-5	424080	15,883	180	147.0	64.6



# STMS

L-5S

BIAS

## SMOOTH TREAD MS

- Exceptional cut and impact protection
- Smooth, extra-deep, and specially compounded rubber ensures maximum resistance to cutting and wearing
- Designed for severe rocky surfaces commonly found in open pits and quarries

CATEGORY	SIZE	PLY/ STAR RATING	COMPOUND/ CONSTRUCTION	TRA/ APPLICATION	ARTICLE #	AVERAGE WEIGHT (LBS)	OTD (32nd)	OVERALL DIAMETER (IN)	OVERALL WIDTH (IN)
<b>LARGE TUBELESS</b>	29.5-29	34	D2A	L-5S	419095	2,384	130	79.6	29.5
	35/65-33	42	D2V	L-5S	424874	3,298	122	81.7	35.3
<b>GIANT TUBELESS</b>	45/65-45	58	D2V	L-5S	422657	6,681	146	107.5	45.1



**SPECIALTY TIRES**



## VGT

E-2 RADIAL

### V-STEEL G-TRACTION

- All-terrain radial performance
- Cut-resistant tread design for even wear
- Designed for fire and rescue vehicles, military vehicles, and mobile cranes
- Excellent traction and durability
- U.S. DOT approved for on-highway and high-speed use

CATEGORY	SIZE	LI / SS	COMPOUND/ CONSTRUCTION	TRA/ APPLICATION	ARTICLE #	AVERAGE WEIGHT (LBS)	OTD (32nd)	OVERALL DIAMETER (IN)	OVERALL WIDTH (IN)
<b>SMALL TUBELESS</b>	24R21	1★	N/A	Firefighting	418951	436	31	54.3	23.7
	445/80R25	170 / E	N/A	Crane	419303	327	30	52.7	17.3



## VHS / VHS2

E-2 RADIAL

### V-STEEL HIGH SPEED SERVICE

- Specially designed for high speed mobile crane service
- Non-directional tread pattern
- Smooth-wearing, low-noise, low-vibration tread pattern
- U.S. DOT approved for on-highway use

CATEGORY	SIZE	LI / SS	COMPOUND/ CONSTRUCTION	TRA/ APPLICATION	ARTICLE #	AVERAGE WEIGHT (LBS)	OTD (32nd)	OVERALL DIAMETER (IN)	OVERALL WIDTH (IN)
<b>SMALL TUBE TYPE</b>	385/95R24 **	170 / E	N/A	Crane	421790	315	29	53.4	15.1
<b>SMALL TUBELESS</b>	385/95R25 ‡	170 / F	N/A	Crane	430824	320	29	53.4	15.1
	445/95R25 ‡*	174 / F	N/A	Crane	3619	440	32	58.4	17.1
	525/80R25 ‡	176 / F	N/A	Crane	13812	491	39	58.3	21.1

\*\* = Speed Rating E  
 ‡\* = VHS2  
 ‡ = Speed Rating F  
 † = Off-highway use only



## VSB

LS-2

RADIAL

### V-STEEL S-BLOCK

- Logging, multipurpose mining and heavy-axle applications
- Heavy-duty all-steel radial casing design
- Traction pattern for all road conditions and maneuverability
- Suitable for both gravel and hard-packed surfaces like paved roads
- Designed for heavy-duty trucks and trailers

CATEGORY	SIZE	PLY/ STAR RATING	COMPOUND/ CONSTRUCTION	TRA/ APPLICATION	ARTICLE #	AVERAGE WEIGHT (LBS)	OTD (32nd)	OVERALL DIAMETER (IN)	OVERALL WIDTH (IN)
<b>SMALL TUBE TYPE</b>	14.00R24	3*	E2A	E-2	299367	356	27	53.7	15.4
<b>SMALL TUBELESS</b>	14.00R25	L	-	Logging	3360	363	27	53.7	15.2



## VSJ

E-7

RADIAL

### V-STEEL JAMAL

- Designed for fire/rescue and military trucks
- Unique tread design ensures maximum flotation and traction
- Designed for operating on desert or soft ground, as well as paved roads

CATEGORY	SIZE	PLY/ STAR RATING	COMPOUND/ CONSTRUCTION	TRA/ APPLICATION	ARTICLE #	AVERAGE WEIGHT (LBS)	OTD (32nd)	OVERALL DIAMETER (IN)	OVERALL WIDTH (IN)
<b>SMALL TUBELESS</b>	21.00R25	‡	‡	E-7	419362	741	28	68.0	23.2

‡ = Compliant with all tire industry standards



## VCH

IND-3

RADIAL

### V-STEEL CONTAINER HANDLER

- Heavy-duty radial construction for container-handler applications
- Strong resistance to puncture and sidewall damage
- Industrial application compound and construction
- Features extra-long life thanks to a specially designed tread compound and smooth wear due to optimized contact pressure

CATEGORY	SIZE	PLY/STAR RATING	COMPOUND/CONSTRUCTION	TRA/APPLICATION	ARTICLE #	AVERAGE WEIGHT (LBS)	OTD (32nd)	OVERALL DIAMETER (IN)	OVERALL WIDTH (IN)
SMALL TUBE TYPE	12.00R24	2★	IDU	Industrial	190177	300	37	49.4	12.7
	14.00R24	3★	IDU	Industrial	293016	414	42	54.8	15.4



## VCHD

IND-4

RADIAL

### V-STEEL CONTAINER HANDLER DEEP

- Strong resistance to puncture and sidewall damage maximizing tire life
- Deep-tread heavy-duty radial construction for container handler applications such as straddle carriers, container stackers, etc.
- Features extra-long life thanks to a unique tread compound and smooth wear due to optimized contact pressure
- Industrial application compound and construction

CATEGORY	SIZE	LI/SS	COMPOUND/CONSTRUCTION	TRA/APPLICATION	ARTICLE #	AVERAGE WEIGHT (LBS)	OTD (32nd)	OVERALL DIAMETER (IN)	OVERALL WIDTH (IN)
SMALL TUBELESS	16.00R25	200 A5	IDU	Industrial	422053	633	68	59.1	17.1



## VCHR

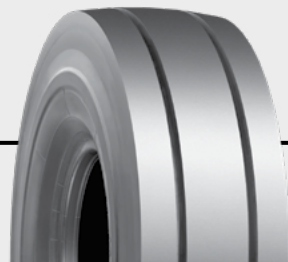
IND-4

RADIAL

### V-STEEL CONTAINER HANDLER-R

- Heavy-duty radial construction for container-handler applications
- Designed for optimal irregular-wear resistance
- Industrial compound and construction application
- Exceptionally long tread life, superior driving comfort and enhanced overall operating efficiency

CATEGORY	SIZE	PLY/ STAR RATING	COMPOUND/ CONSTRUCTION	TRA/ APPLICATION	ARTICLE #	AVERAGE WEIGHT (LBS)	OTD (32nd)	OVERALL DIAMETER (IN)	OVERALL WIDTH (IN)
<b>SMALL TUBELESS</b>	16.00R25	2★	IDU	Industrial	431810	625	63	59.2	17.1



## VCHP

IND

RADIAL

### V-STEEL CONTAINER HANDLER PREMIUM

- Industrial application compound and construction
- All-steel radial casing improve operational stability and safety
- Designed for even wear and superior cornering

CATEGORY	SIZE	PLY/ STAR RATING	COMPOUND/ CONSTRUCTION	TRA/ APPLICATION	ARTICLE #	AVERAGE WEIGHT (LBS)	OTD (32nd)	OVERALL DIAMETER (IN)	OVERALL WIDTH (IN)
<b>SMALL TUBELESS</b>	450/95R20	204 A5	IDU	Industrial	4737	625	63	59.2	17.1





## VCHS

IND-4 RADIAL

### V-STEEL CONTAINER HANDLER S

- Deep-tread heavy-duty 3\* radial construction for container-handler applications
- Optimal design for sidewall stability
- Industrial application compound and construction
- All-steel radial casings improve operational stability and safety
- Unique pattern prevents irregular wear, extending tread life

CATEGORY	SIZE	LI / SS	COMPOUND/ CONSTRUCTION	TRA/ APPLICATION	ARTICLE #	AVERAGE WEIGHT (LBS)	OTD (32nd)	OVERALL DIAMETER (IN)	OVERALL WIDTH (IN)
<b>SMALL TUBE TYPE</b>	10.00R20	166 A5	IDU	Industrial	8703	222	47	42	10
	12.00R20	176 A5	IDU	Industrial	227397	308	52	44.8	11.7
	14.00R24	3*	IDU	Industrial	188205	520	79	55.6	15.1
<b>SMALL TUBELESS</b>	14.00R24	3*	IDU	Industrial	7273	525	79	55.6	15.1
	18.00R25	3*	IDU	Industrial	423939	929	81	65.0	19.8
<b>LARGE TUBELESS</b>	18.00R33	3*	IDU	Industrial	424064	1,104	86	73.1	19.4



## VRLS

IND-4 RADIAL

### V-STEEL R-LUG S

- Deep non-directional rock-service tread pattern
- Excellent haulage performance on rock, gravel or packed earth
- Rock-deep tread and sidewall protectors

CATEGORY	SIZE	PLY/ STAR RATING	COMPOUND/ CONSTRUCTION	TRA/ APPLICATION	ARTICLE #	AVERAGE WEIGHT (LBS)	OTD (32nd)	OVERALL DIAMETER (IN)	OVERALL WIDTH (IN)
<b>SMALL TUBELESS</b>	16.00R25	2*	IDU	Industrial	423203	613	57	60.3	17.6



## VSDL

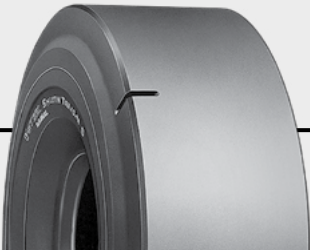
IND-5

RADIAL

### V-STEEL D-LUG

- Extra-deep tread and shoulder protection offer cut and impact resistance, stability, and ride comfort
- Excellent traction in severe conditions
- Designed for extra-heavy-duty performance
- Specially designed sidewall provides extended protection from cutting
- Designed for severe or rocky surfaces and underground use

CATEGORY	SIZE	PLY/ STAR RATING	COMPOUND/ CONSTRUCTION	TRA/ APPLICATION	ARTICLE #	AVERAGE WEIGHT (LBS)	OTD (32nd)	OVERALL DIAMETER (IN)	OVERALL WIDTH (IN)
<b>LARGE TUBELESS</b>	35/65R33	2*	IDU	Industrial	429872	2,720	120	81.7	34.6



## VSMS

IND-5

RADIAL

### V-STEEL SMOOTH TREAD MINE SERVICE

- Maximum cut and wear resistance
- Extra-deep tread for severe conditions
- Extra-heavy-duty 2\* all-steel radial-casing design

CATEGORY	SIZE	PLY/ STAR RATING	COMPOUND/ CONSTRUCTION	TRA/ APPLICATION	ARTICLE #	AVERAGE WEIGHT (LBS)	OTD (32nd)	OVERALL DIAMETER (IN)	OVERALL WIDTH (IN)
<b>SMALL TUBELESS</b>	18.00R25	2*	IDU	Industrial	423785	1,100	105	65.9	20.2



# RL

IND-3

RADIAL

## R-LUG

- Non-directional pattern for outstanding rough terrain traction
- Special compounds to resist heat and cutting
- Exceptional cut resistance
- Designed for operating on rock, coal and earth surfaces

CATEGORY	SIZE	PLY/ STAR RATING	COMPOUND/ CONSTRUCTION	TRA/ APPLICATION	ARTICLE #	AVERAGE WEIGHT (LBS)	OTD (32nd)	OVERALL DIAMETER (IN)	OVERALL WIDTH (IN)
<b>SMALL TUBELESS</b>	21.00-25	40	IDU	Industrial	424789	1015	52	68.9	22.4



# ELS2

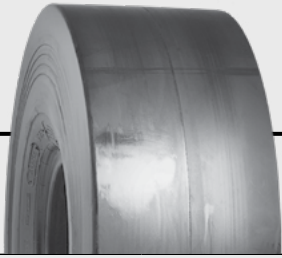
IND-4

BIAS

## E-LUG S2

- Designed for container-handler applications
- Strong resistance to puncture and sidewall damage
- Industrial application compound and construction

CATEGORY	SIZE	PLY/ STAR RATING	COMPOUND/ CONSTRUCTION	TRA/ APPLICATION	ARTICLE #	AVERAGE WEIGHT (LBS)	OTD (32nd)	OVERALL DIAMETER (IN)	OVERALL WIDTH (IN)
<b>SMALL TUBELESS</b>	18.00-25	40	IDU	Industrial	422894	853	84	66.3	20.3
<b>LARGE TUBELESS</b>	18.00-33	36	IDU	Industrial	423645	973	84	73.9	20.3



# STMS

IND-5

BIAS

## SMOOTH TREAD-MS

- Extra-deep tread for maximum life and exceptional cut resistance
- Designed for container-handler applications
- Smooth, extra-deep, and specially compounded rubber ensures maximum resistance to cutting, wearing, and heat

CATEGORY	SIZE	PLY/ STAR RATING	COMPOUND/ CONSTRUCTION	TRA/ APPLICATION	ARTICLE #	AVERAGE WEIGHT (LBS)	OTD (32nd)	OVERALL DIAMETER (IN)	OVERALL WIDTH (IN)
<b>SMALL TUBE TYPE</b>	12.00-24	20	D2A	L-5S	295256	350	69	50.2	12.6
	14.00-24	20	D2A	L-5S	263303	534	98	54.1	14.4
<b>SMALL TUBELESS</b>	17.5-25	20	D2A	L-5S	261289	627	87	54.5	17.7
	18.00-25	32	D2A	L-5S	420972	1,092	106	65.9	20.5
	18.00-25	40	IDU	L-5S	422231	1,083	106	65.9	20.5
	26.5-25	32	D2A	L-5S	275573	1,869	120	70.8	26.8
	26.5-25	36	D2A	L-5S	421863	1,904	120	70.8	26.8



# RR

C-1

BIAS

## ROAD ROLLER

- Smooth tread is specially designed for compacting road materials

CATEGORY	SIZE	PLY/ STAR RATING	COMPOUND/ CONSTRUCTION	TRA/ APPLICATION	ARTICLE #	AVERAGE WEIGHT (LBS)	OTD (32nd)	OVERALL DIAMETER (IN)	OVERALL WIDTH (IN)
<b>TUBE TYPE</b>	9.5 / 65-15	6	-	C-1	226751	51	22	26.4	9.4
	7.50-16	6	-	C-1	014271	65	-	30.6	8.7
<b>TUBE TYPE</b>	9.00-20	10	-	C-1	289450	113	-	39.6	10.4
	14 / 70-20	12	-	C-1	191112	155	-	38.4	15.0



**RADIAL TIRES**

# MACHINE SUMMARY RADIAL, BIAS, SPECIALTY



	TRACTION	ROCK	ROCK DEEP	ROCK EXTRA DEEP	ROCK EXTRA DEEP SMOOTH	INDUSTRIAL & OTHER	CONSTRUCTION
DUMP TRUCK RIGID		SRG	SRG DT				
DUMP TRUCK ARTICULATED		VersaBuilt AP	VersaBuilt DT				
GRADER	VersaBuilt AT SGG		SRG DT RB				
LOADER DOZER	VersaBuilt AT SGG	VersaBuilt AP SRG SRG LD	VersaBuilt DT Duraload DT SRG DT LD	Duraload SDT HTLD SDT LD	Duraload PT PTLD PTLD UMS		
SCRAPER		SRG SRG LD	SRG DT				
UNDERGROUND					Duraload PT PTLD PTLD UMS		
CONTAINER HANDLER & INDUSTRIAL MACHINES						PT SRG SRG DT SRG DT LD	
OTHER	SGG	SRG LD				PTLD Sand Champion SRG DT	Duraforce AP Duraforce MH

# MACHINE SUMMARY COMPACT



CONSTRUCTION	
BACKHOE	All Traction Utility Duraforce RT Industrial Special Super Traction Loader Duraforce HD Duraforce DT Duraforce ND Duraforce SDT Super Traction Duplex
SKID STEER	Duraforce HD Duraforce DT Duraforce ND Duraforce SDT Super Traction Duplex
OTHER	Duraforce HD Duraforce ND Duraforce SDT Duraforce Utility Super Traction Duplex

# SPECIFICATION CODES



Each Firestone off-the-road tire has its own specification code that enables the customer to properly identify and match the right Firestone tire.

DESCRIPTION	
STC	Standard Compound / Construction
CRC	Cut-Resistant Compound/Construction (Type 2-A)
NY	Nylon
NS	Nylon Steel (Nylon Casing With Steel Breaker Belts)
UMS	Underground Mining Service
IDU	Industrial
MH	Material Handler
N/A	Not Applicable

# CONVERSION CHART [STAR RATING TO PLY RATING]



	TIRE SIZE	STAR RATING	CORRESPONDING PLY RATING
<b>GRADER</b>	14.00R24	1★	up to 16
	16.00R24	1★	up to 16
	17.5R25	1★	up to 16
<b>EARTHMOVER</b>	12.00R24	3★	up to 24
	14.00R24	3★	up to 32
	14.00R25	3★	up to 32
	16.00R25	2★	up to 36
	18.00R25	1★	up to 24
		2★	up to 36
	18.00R33	2★	up to 40
	21.00R33	2★	up to 36
	21.00R35	2★	up to 44
	24.00R35	2★	up to 48
	24.00R49	2★	up to 48
	27.00R49	2★	up to 54
	30.00R51	2★	up to 58
	33.00R51	2★	up to 64
	36.00R51	2★	up to 66
	40.00R57	2★	up to 74
	17.5R25	1★	up to 16
	20.5R25	1★	up to 24
		2★	up to 28
	25/65R25	2★	up to 32
	23.5R25	1★	up to 24
		2★	up to 32
	26.5R25	2★	up to 32
	29.5R25	2★	up to 34
	29.5R29	2★	up to 40
	33.25R29	2★	up to 44
	33.5R33	2★	up to 44
	37.5R33	2★	up to 48
	33.25R35	2★	up to 44
	37.25R35	2★	up to 48
	37.5R39	2★	up to 52
	40.5/75R39	2★	up to 54
	<b>LOADER</b>	15.5R25	1★
17.5R25		1★	up to 16
20.5R25		1★	up to 24
		2★	up to 28
23.5R25		1★	up to 24
		2★	up to 32
26.5R25		1★	up to 24
		2★	up to 36
29.5R25		1★	up to 28
		2★	up to 34
29.5R29		1★	up to 34
35/65R33		1★	up to 36
35/65R33		2★	up to 42
45/65R45		1★	up to 50
45/65R45		2★	up to 58



## VERSABUILT AT

G-2, L-2

RADIAL

### VERSABUILT ALL TRACTION

- Provides serious traction and dependable performance
- Self-cleaning tread pattern to provide traction on multiple surfaces
- Tough, proprietary compound for long wear life and cut resistance
- Built with steel casings and sidewall SideArmor to protect against cuts and punctures by deflecting stones and debris

CATEGORY	SIZE	PLY/STAR RATING	COMPOUND/ CONSTRUCTION	TRA/ APPLICATION	ARTICLE #	AVERAGE WEIGHT (LBS)	OTD (32nd)	OVERALL DIAMETER (IN)	OVERALL WIDTH (IN)
SMALL TUBELESS	14.00R24	1★	G2A	G2	5639	264	34	53.4	15.7
	17.5R25	1★	CRC	G2/L2	5507	286	35	52.8	17.4
	20.5R25	1★	CRC	G2/L2	5508	377	40	58.1	21.0
	23.5R25	1★	CRC	G2/L2	5509	653	44	63.0	24.1



## VERSABUILT AP

E-3, L-3

RADIAL

### VERSABUILT ALL PURPOSE

- Designed for traction and dependable performance across a variety of surfaces
- Tough, proprietary compound for long wear life and cut resistance
- Built with steel casings and sidewall SideArmor to protect against cuts and punctures by deflecting stones and debris

CATEGORY	SIZE	PLY/STAR RATING	COMPOUND/ CONSTRUCTION	TRA/ APPLICATION	ARTICLE #	AVERAGE WEIGHT (LBS)	OTD (32nd)	OVERALL DIAMETER (IN)	OVERALL WIDTH (IN)
SMALL TUBELESS	17.5R25	MS	CRC	E3/L3	5498	314	32	52.9	17.2
	20.5R25	MS	CRC	E3/L3	5499	473	37	58.4	20.8
	23.5R25	MS	CRC	E3/L3	5501	654	42	63.1	24.3
LARGE TUBELESS	26.5R25	MS	CRC	E3/L3	5502	909	44	68.2	27.0
	29.5R25	MS	CRC	E3/L3	5503	1116	48	73.1	30.4





# VERSABUILT DT

E-4, L-4

RADIAL

## VERSABUILT DEEP TREAD

- Deep tread pattern designed to provide long wear life and dependability
- Self-cleaning tread pattern provides solid traction, especially well suited for dump trucks
- Tough, proprietary compound promotes long wear life and provides increased resistance to punctures and cuts
- Built with steel casings and sidewall SideArmor to protect against cuts and punctures by deflecting stones and debris

CATEGORY	SIZE	PLY/STAR RATING	COMPOUND/ CONSTRUCTION	TRA/ APPLICATION	ARTICLE #	AVERAGE WEIGHT (LBS)	OTD (32nd)	OVERALL DIAMETER (IN)	OVERALL WIDTH (IN)
SMALL TUBELESS	23.5R25	MS	CRC	E4/L4	5504	776	79	65.3	24.1
	26.5R25	MS	CRC	E4/L4	5505	965	69	69.6	27.0
LARGE TUBELESS	29.5R25	MS	CRC	E4/L4	5506	1222	76	74.5	30.4



**BIAS TIRES**



## SGG MH / SGG RB

E-2, G-2, L-2

BIAS

### SUPER GROUND GRIP

- Directional tread pattern
- Self-cleaning tread design
- Exceptional flotation and traction in soft soil or mud

CATEGORY	SIZE	PLY/STAR RATING	COMPOUND/ CONSTRUCTION	TRA/ APPLICATION	ARTICLE #	AVERAGE WEIGHT (LBS)	OTD (32nd)	OVERALL DIAMETER (IN)	OVERALL WIDTH (IN)
SMALL TUBELESS	13.00-24	12	MH	G2/L2	429209	151	29	50.3	14.5
	13.00-24	16	STC	G2/L2	425163	174	29	50.3	14.5
	14.00-24	12	STC	G2/L2	425214	184	31	53.2	16.0
	14.00-24	16	STC	G2/L2	425384	206	31	53.2	16.0
	16.00-24	16	STC	G-2	426166	316	31	57.4	17.7
	15.5-25	12	STC	E2/L2	425248	184	29	50.0	15.8
	17.5-25	12	STC	E2/L2	425129	222	31	53.6	18.0
	17.5-25	16	STC	L-2	425180	245	31	53.6	18.0
	17.5-25	20	STC	L-2	429243	275	31	53.6	18.0
	20.5-25	16	STC	E2/L2	408492	339	35	58.5	21.0
	23.5-25	20	STC	E2/L2	404969	499	39	63.4	24.1
LARGE TUBELESS	29.5-25	22	STC	E2/L2	404810	875	47	74.3	30.3



**SRG**



**E-3, L-3**

**BIAS**

**SUPER ROCK GRIP**

- Nondirectional rock tread pattern for excellent traction and flotation
- Extra-tough tread compound for cut and impact protection
- Wide base sizes offer wide cross section and tread

CATEGORY	SIZE	PLY/STAR RATING	COMPOUND/ CONSTRUCTION	TRA/ APPLICATION	ARTICLE #	AVERAGE WEIGHT (LBS)	OTD (32nd)	OVERALL DIAMETER (IN)	OVERALL WIDTH (IN)
<b>SMALL TUBELESS</b>	16.00-25	28	STC	E-3	413518	460	36	58.8	17.2
	26.5-25	26	STC	E3/L3	401757	796	44	69.2	26.6
<b>LARGE TUBELESS</b>	29.5-29	28	STC	E-3	401889	1,178	48	78.0	30.8
	29.5-29	34	STC	E-3	401625	1,221	48	78.0	30.8
	33.25-29	32	STC	E-3	280138	1,610	57	82.3	33.9
	29.5-35	34	STC	E-3	401668	1,319	48	83.4	30.5
	33.25-35	38	STC	E-3	410241	1,870	53	89.7	33.7
	37.25-35 +	36	STC	E-3	413461	2,241	62	94.7	37.9
	37.5-39 +	52	STC	E-3	412546	2,781	60	99.5	38.0
	18.00-49	32	STC	E-3	401560	1,099	34	87.0	19.4
	30.00-56.5	48	STC	E-3	413127	2,441	53	103.4	28.5

+ = Similar to marked photo



# SRG LD

E-3, L-3

BIAS

## SUPER ROCK GRIP LOADER DOZER

- Non-directional rock tread pattern for excellent traction and flotation
- Extra-tough tread compound for cut and impact protection
- Wide base sizes offer wide cross section and tread

CATEGORY	SIZE	PLY/STAR RATING	COMPOUND/ CONSTRUCTION	TRA/ APPLICATION	ARTICLE #	AVERAGE WEIGHT (LBS)	OTD (32nd)	OVERALL DIAMETER (IN)	OVERALL WIDTH (IN)
SMALL TUBELESS	17.5-25	12	CRC	L-3	425537	221	32	53.4	18.0
	17.5-25	16	STC	L-3	425554	242	32	53.4	18.0
	17.5-25	20	STC	L-3	425571	327	32	53.4	18.0
LARGE TUBELESS	20.5-25	16	STC	E3/L3	408476	341	35	59.0	21.1
	20.5-25	20	STC	E3/L3	414646	366	35	59.0	21.1
	23.5-25	20	STC	E3/L3	400610	551	39	63.9	24.2
	26.5-25	20	STC	E3/L3	400629	756	44	69.2	26.6
	29.5-25	28	STC	E3/L3	414638	1,056	48	74.0	30.8
	29.5-29	40	STC	L-3	416916	1,379	48	78.0	30.8



# SRG DT

E-4

BIAS

## SUPER ROCK GRIP DEEP TREAD

- Extra-heavy-duty non-directional design
- Exceptional traction
- Extra-deep tread design provides excellent resistance to impacts and cuts

CATEGORY	SIZE	PLY/STAR RATING	COMPOUND/ CONSTRUCTION	TRA/ APPLICATION	ARTICLE #	AVERAGE WEIGHT (LBS)	OTD (32nd)	OVERALL DIAMETER (IN)	OVERALL WIDTH (IN)
SMALL TUBELESS	16.00-25	28	STC	E-4	423149	555	62	60.2	17.2
	18.00-25	32	STC	E-4	403172	733	69	64.5	20.0
LARGE TUBELESS	18.00-33	32	STC	E-4	413925	901	69	72.9	20.3
	18.00-33	32	CRC	E-4	414972	901	69	72.9	20.3
	21.00-35	36	CRC	E-4	414131	1,268	67	80.1	22.9
	33.25-35	38	STC	E-4	413380	2,145	86	89.2	34.0
GIANT TUBELESS	27.00-49	48	STC	E-4	411663	2,739	79	105.5	29.6
	30.00-51	52	STC	E-4	416711	3,594	87	113.0	33.2
	33.00-51	58	STC	E-4	415677	4,565	93	118.3	36.0
	36.00-51	58	STC	E-4	414832	5,374	104	126.5	39.3
	40.00-57	76	STC NY	E-4	424773	7,735	126	142.8	43.5



## DURALOAD DT

L-4

BIAS

### DURALOAD DEEP TREAD

- Unique sidewall rib protection reduces cuts and sidewall damage
- New tread design for optimal traction and wear life
- Shoulder tie bars for added resistance to groove cracking, lug tearing and belt-edge separations
- Larger footprint with more even footprint pressure

CATEGORY	SIZE	PLY/STAR RATING	COMPOUND/ CONSTRUCTION	TRA/ APPLICATION	ARTICLE #	AVERAGE WEIGHT (LBS)	OTD (32nd)	OVERALL DIAMETER (IN)	OVERALL WIDTH (IN)
LARGE TUBELESS	35/65-33	42	STC NY	L-4	000989	2,557	72	82.8	36.6
	35/65-33	42	STC NS	L-4	000990	2,864	72	82.8	36.6
GIANT TUBELESS	45/65-45	58	STC NY	L-4	431691	5,081	76	109.3	45.6
	45/65-45	58	STC NS	L-4	431708	5,387	76	109.3	45.6



## SRG DT LD

L-4

BIAS

### SUPER ROCK GRIP DEEP TREAD LOADER DOZER

- Extra-heavy-duty non-directional rock-service design
- Exceptional off-road traction
- Excellent tread-cleaning design

CATEGORY	SIZE	PLY/STAR RATING	COMPOUND/ CONSTRUCTION	TRA/ APPLICATION	ARTICLE #	AVERAGE WEIGHT (LBS)	OTD (32nd)	OVERALL DIAMETER (IN)	OVERALL WIDTH (IN)
SMALL TUBELESS	23.5-25	24	STC	L-4	417459	743	67	65.88	23.8
	26.5-25	26	STC	L-4	416401	1,023	67	69.2	26.6
	29.5-25	28	STC	L-4	416924	1,341	77	75.6	29.5
LARGE TUBELESS	65/35-33	30	STC NY	L-4	416185	2,036	72	82.8	34.7
GIANT TUBELESS	50/80-57 +	68	STC NY	L-4	421456	9,470	126	142.9	51.1
	58/85-57 •	84	STC NY	L-4	424501	12,890	116	154.0	56.3
	70/70-57	84	STC NY	L-4	000988	14,870	116	157.2	67.0

+ = Similar to marked photo

• = Similar to photo marked with plus on SDT LD



## SRG DT RB

G-4

BIAS

**SUPER ROCK GRIP  
DEEP TREAD  
ROAD BUILDER**

- Extra-heavy-duty non-directional rock-service tread pattern
- Exceptional off-road traction and long wear
- Superior tread-cleaning design

CATEGORY	SIZE	PLY/STAR RATING	COMPOUND/ CONSTRUCTION	TRA/ APPLICATION	ARTICLE #	AVERAGE WEIGHT (LBS)	OTD (32nd)	OVERALL DIAMETER (IN)	OVERALL WIDTH (IN)
SMALL TUBELESS	14.00-24	12	STC	G-4	425656	298	58	54.7	15.2



## DURALOAD SDT

L-5

BIAS

**DURALOAD  
SUPER DEEP TREAD**

- Unique sidewall rib protection reduces cuts and sidewall damage
- Tread designed for optimal traction and wear life
- Shoulder tie bars for added resistance to groove cracking, lug tearing and belt-edge separations

CATEGORY	SIZE	PLY/STAR RATING	COMPOUND/ CONSTRUCTION	TRA/ APPLICATION	ARTICLE #	AVERAGE WEIGHT (LBS)	OTD (32nd)	OVERALL DIAMETER (IN)	OVERALL WIDTH (IN)
LARGE TUBELESS	35/65-33	42	STC NY	L-5	000991	2,907	116	81.9	36.3
	35/65-33	42	STC NS	L-5	431657	3,116	116	81.9	36.3
GIANT TUBELESS	45/65-45	58	STC NY	L-5	431674	5,770	130	109.0	45.6
	45/65-45	58	STC NS	L-5	431606	6,223	130	109.0	45.6





# SDT LD



L - 5

BIAS

## SUPER DEEP TREAD LOADER DOZER

- Super-heavy-duty non-directional rock-service tread design
- Some sizes available in Steel Shield construction for additional cut and impact protection
- Extra tread depth is 250% deeper than the Firestone SRG LD

CATEGORY	SIZE	PLY/STAR RATING	COMPOUND/ CONSTRUCTION	TRA/ APPLICATION	ARTICLE #	AVERAGE WEIGHT (LBS)	OTD (32nd)	OVERALL DIAMETER (IN)	OVERALL WIDTH (IN)
SMALL TUBELESS	20.5-25	16	STC	L-5	403903	610	88	60.9	20.7
	20.5-25	20	STC	L-5	417610	634	88	60.9	20.7
	23.5-25	16	STC	L-5	403911	804	98	65.9	24.4
	23.5-25	20	STC	L-5	403970	836	98	65.9	24.4
	26.5-25	20	STC	L-5	403989	1,131	108	71.1	27.0
	26.5-25	26	STC	L-5	416428	1,165	108	71.1	27.0
LARGE TUBELESS	29.5-25	22	STC	L-5	413984	1,472	120	74.9	29.9
	29.5-25	28	STC	L-5	416436	1,530	120	74.9	29.9
	65/35-33	30	STC NY	L-5	416649	2,375	120	82.8	33.8
	65/35-33	42	STC NS	L-5	427832	2,752	120	82.8	33.8
	41.25/70-39	42	STC NY	L-5	417033	4,134	146	98.7	40.9
	41.25/70-39	42	STC NS	L-5	416789	4,523	146	98.7	40.9
GIANT TUBELESS	65/40-39	36	STC	L-5	280159	3,343	134	94.9	38.6
	53.5/85-57 +	76	STC NY	L-5	420468	11,629	153	151.9	53.9

+ = Similar to marked photo



## DURALOAD PT

L-5S

BIAS

### DURALOAD PLAIN TREAD

- Optimized casing design for longer life and durability
- Flat tread provides even footprint pressure for longer life
- Unique sidewall rib protection reduces cuts and sidewall damage

CATEGORY	SIZE	PLY/STAR RATING	COMPOUND/ CONSTRUCTION	TRA/ APPLICATION	ARTICLE #	AVERAGE WEIGHT (LBS)	OTD (32nd)	OVERALL DIAMETER (IN)	OVERALL WIDTH (IN)
LARGE TUBELESS	35/65-33	42	STC NY	L-5S	000992	3,194	116	81.9	36.3
GIANT TUBELESS	45/65-45	58	STC NY	L-5S	000468	6,228	133	109.0	45.6
	45/65-45	58	STC NS	L-5S	000469	6,470	133	109.0	45.6



## HTLD

L-5, L-5S

BIAS

### HALF TREAD LOADER DOZER

- Super-heavy half-tread design
- Special cut and impact resistance with outside shoulder protector
- Half-deep lug-tread design for excellent traction

CATEGORY	SIZE	PLY/STAR RATING	COMPOUND/ CONSTRUCTION	TRA/ APPLICATION	ARTICLE #	AVERAGE WEIGHT (LBS)	OTD (32nd)	OVERALL DIAMETER (IN)	OVERALL WIDTH (IN)
LARGE TUBELESS	29.5-25	28	STC	L5/L5S	416991	1,673	120	75.6	29.5
	65/35-33	42	STC NS	L5/L5S	430246	2,866	120	82.8	33.8
GIANT TUBELESS	65/45-45	50	STC NY	L5/L5S	280255	5,366	150	108.1	43.1



## PTLD

L-5S

BIAS

### PLAIN TREAD LOADER DOZER

- Super-heavy-duty plain tread design for extreme service applications
- Some sizes available in Steel Shield construction for additional cut and impact protection

CATEGORY	SIZE	PLY/STAR RATING	COMPOUND/ CONSTRUCTION	TRA/ APPLICATION	ARTICLE #	AVERAGE WEIGHT (LBS)	OTD (32nd)	OVERALL DIAMETER (IN)	OVERALL WIDTH (IN)
SMALL TUBELESS	26.5-25	26	STC	L-5S	417335	1,665	108	71.1	27.0
LARGE TUBELESS	29.5-25	34	STC NY	L-5S	417408	1,861	120	75.6	29.5
	65/35-33	36	STC NY	L-5S	417602	2,718	120	82.8	33.8
	65/35-33	42	STC NS	L-5S	427917	2,956	120	82.8	33.8
	45/65-39	46	STC NS	L-5S	423173	5,361	147	103.5	38.6



## PTLD UMS

L-5S

BIAS

### PLAIN TREAD LOADER DOZER UNDERGROUND MINING SERVICE

- Super-heavy-duty plain tread design for extreme underground service applications
- Special compounding provides excellent tread life
- Exceptional cut and impact protection

CATEGORY	SIZE	PLY/STAR RATING	COMPOUND/ CONSTRUCTION	TRA/ APPLICATION	ARTICLE #	AVERAGE WEIGHT (LBS)	OTD (32nd)	OVERALL DIAMETER (IN)	OVERALL WIDTH (IN)
SMALL TUBELESS	18.00-25	32	UMS	L-5S	416819	1,302	97	65.9	19.6
	26.5-25	32	UMS	L-5S	416568	1,763	108	71.1	27.0
LARGE TUBELESS	29.5-25	34	UMS	L-5S	430484	1,886	120	75.6	29.5
	29.5-29	34	UMS CRC	L-5S	431776	2,098	120	80.1	30.5



**SPECIALTY TIRES**



## DURAFORCE MH

L-3

BIAS

### DURAFORCE MATERIAL HANDLER

- Extra-deep tread for long-lasting wear
- New tread design reduces ground compaction and surface pressure on hard surfaces
- Protective shoulder rib and low-profile vertical sidewall reduces sidewall damage
- Unique non-directional tread pattern provides excellent traction and long wear

CATEGORY	SIZE	PLY/STAR RATING	COMPOUND/ CONSTRUCTION	TRA/ APPLICATION	ARTICLE #	AVERAGE WEIGHT (LBS)	OTD (32nd)	OVERALL DIAMETER (IN)	OVERALL WIDTH (IN)
LARGE TUBELESS	370/75-28 +	14	MH	L-3	429770	217	42	50.3	14.5
	400/75-28 +	16	MH	L-3	431453	236	42	52.3	15.7

+ = For use on GR OTR wheel only



## PTLD IDU

IND-3

BIAS

### PLAIN TREAD LOADER DOZER

- Super-heavy-duty plain-tread design for extreme service applications
- Extra-tough plain-tread design

CATEGORY	SIZE	PLY/STAR RATING	COMPOUND/ CONSTRUCTION	TRA/ APPLICATION	ARTICLE #	AVERAGE WEIGHT (LBS)	OTD (32nd)	OVERALL DIAMETER (IN)	OVERALL WIDTH (IN)
LARGE TUBELESS	33.25-35	50	IDU	INDUSTRIAL-3S	003565	2,565	53	89.6	34.1



## SRG IDU

IND - 3

BIAS

### SUPER ROCK GRIP

- Non-directional rock-tread pattern for excellent traction and flotation
- Extra-tough tread compound for cut and impact protection
- Wide base sizes offer wide cross- section and tread

CATEGORY	SIZE	PLY/STAR RATING	COMPOUND/ CONSTRUCTION	TRA/ APPLICATION	ARTICLE #	AVERAGE WEIGHT (LBS)	OTD (32nd)	OVERALL DIAMETER (IN)	OVERALL WIDTH (IN)
SMALL TUBELESS	26.5-25	44	IDU	INDUSTRIAL-3	480136	1,045	44	68.8	27.7



## PT IDU

IND - 4

BIAS

### PLAIN TREAD

- Super-heavy-duty plain-tread design for extreme service applications

CATEGORY	SIZE	PLY/STAR RATING	COMPOUND/ CONSTRUCTION	TRA/ APPLICATION	ARTICLE #	AVERAGE WEIGHT (LBS)	OTD (32nd)	OVERALL DIAMETER (IN)	OVERALL WIDTH (IN)
SMALL TUBELESS	18.00-25	40	IDU	INDUSTRIAL-4S	5524	1,036	69	66.1	20.9



## SRG DT IDU

IND-4

BIAS

### SUPER ROCK GRIP DEEP TREAD

- Extra-heavy-duty non-directional design
- Exceptional traction
- Extra-deep tread design provides excellent resistance to impacts and cuts

CATEGORY	SIZE	PLY/STAR RATING	COMPOUND/ CONSTRUCTION	TRA/ APPLICATION	ARTICLE #	AVERAGE WEIGHT (LBS)	OTD (32nd)	OVERALL DIAMETER (IN)	OVERALL WIDTH (IN)
SMALL TUBELESS	18.00-25	40	IDU	INDUSTRIAL-4	426064	839	69	64.5	20.0
	18.00-33	44	IDU	INDUSTRIAL-4	421308	1,029	69	72.9	20.3
LARGE TUBELESS	33.5-33 +	50	IDU	INDUSTRIAL-4	800560	2,461	86	90.4	33.5
	21.00-35 +	40	IDU	INDUSTRIAL-4	411604	1,299	67	80.1	22.9
	33.25-35 +	50	IDU	INDUSTRIAL-4	280004	2,429	86	89.2	34.0

+ = Container Handler use only



## SRG DT LD IDU

IND-4

BIAS

### SUPER ROCK GRIP DEEP TREAD LOADER DOZER

- Extra-heavy-duty non-directional rock-service design
- Exceptional off-the-road traction
- Excellent tread-cleaning design

CATEGORY	SIZE	PLY/STAR RATING	COMPOUND/ CONSTRUCTION	TRA/ APPLICATION	ARTICLE #	AVERAGE WEIGHT (LBS)	OTD (32nd)	OVERALL DIAMETER (IN)	OVERALL WIDTH (IN)
LARGE TUBELESS	30.00-33	46	IDU	INDUSTRIAL-4	416215	1,615	67	74.7	29.1
	65/35-33	42	IDU	INDUSTRIAL-4	421294	2,268	72	82.8	34.7



## SAND CHAMPION

E-7

BIAS

- Sand-service application
- Designed for fire, rescue and military trucks

CATEGORY	SIZE	PLY/STAR RATING	COMPOUND/ CONSTRUCTION	TRA/ APPLICATION	ARTICLE #	AVERAGE WEIGHT (LBS)	OTD (32nd)	OVERALL DIAMETER (IN)	OVERALL WIDTH (IN)
LARGE TUBELESS	29.5-25	28	NY	E-7	416908	880	22	71.9	30.3



## DURAFORCE AP

E-7

BIAS

### DURAFORCE ASPHALT PAVER

- Notched rib pattern provides traction performance on unimproved surfaces, including grass, dirt and gravel
- Outside diameter ideal for restrictive asphalt paver wheel wells
- Shallow E-7 tread depth helps manage heat from hot paving for longer service

CATEGORY	SIZE	PLY/STAR RATING	COMPOUND/ CONSTRUCTION	TRA/ APPLICATION	ARTICLE #	AVERAGE WEIGHT (LBS)	OTD (32nd)	OVERALL DIAMETER (IN)	OVERALL WIDTH (IN)
SMALL TUBELESS	18.00-25	16	NY	E-7	1277	318	16	59.9	18.8
	21.00-25	16	NY	E-7	3771	421	16	67.1	23.8





**COMPACT TIRES**



## ALL TRACTION UTILITY

I-3

BIAS

- Excellent tread-wear resistance on hard-surface roads
- Special compound construction provides superior durability
- Ideal for use on soil

CATEGORY	SIZE	PLY/STAR RATING	SPEED SYMBOL	TRA/ APPLICATION	ARTICLE #	AVERAGE WEIGHT (LBS)	BAR HEIGHT (32nd / IN)
COMPACT	10.5/80-18	10	A8	I-3	351741	65	28 / 0.88



## ALL TRACTION UTILITY

R-4

RADIAL

- Long wear and great traction in a radial tire
- Excellent traction through deep overlapping bar cleats
- Great tire for medium-duty service use
- Long wear through tough sidewalls with special compounds

CATEGORY	SIZE	PLY/STAR RATING	SPEED SYMBOL	TRA/ APPLICATION	ARTICLE #	AVERAGE WEIGHT (LBS)	LOAD INDEX	BAR HEIGHT (32nd / IN)
COMPACT	17.5LR24	2*	A8	R-4	351989	203	133	32 / 1.01

L = Low-profile tire



# ALL TRACTION UTILITY

R-4

BIAS

- Wide-buttressed lugs provide excellent durability and long tread life
- Special rubber compounds and nylon cord body provide excellent impact resistance and long wear
- Ideal for use on concrete and soil

CATEGORY	SIZE	PLY/STAR RATING	SPEED SYMBOL	TRA/ APPLICATION	ARTICLE #	AVERAGE WEIGHT (LBS)	BAR HEIGHT (32nd / IN)
COMPACT	16.9-24	12	A8	R-4	363990	165	34 / 1.06
	17.5L-24	10	A8	R-4	325880	176	32 / 1.01
	18.4-24	8	A8	R-4	316083	177	35 / 1.10
	18.4-24	12	A8	R-4	355224	205	35 / 1.10
	19.5L-24	10	A8	R-4	359343	208	34 / 1.05
	19.5L-24	12	A8	R-4	380259	208	34 / 1.05
	21L-24	12	A8	R-4	321370	243	35 / 1.10
	21L-24	16	A8	R-4	327727	277	35 / 1.10
	21L-24	18	A8	R-4	372762	276	35 / 1.10
	14.9-28	8	A8	R-4	306371	147	32 / 1.00
	16.9-28	8	A8	R-4	000900	184	34 / 1.06
	16.9-28	12	A8	R-4	379307	203	34 / 1.06
	18.4-28	12	A8	R-4	355410	224	35 / 1.10
	21L-28	14	A8	R-4	356093	280	36 / 1.11

L = Low-profile tire



# DURAFORCE RT

R-4

RADIAL

## DURAFORCE RADIAL TRACTION

- Harmonic noise-treated for excellent ride and reduced vibration
- Excellent fuel efficiency and improved ride through radial design
- Excellent grip and multi-direction traction
- Large footprint reduces soil compaction

CATEGORY	SIZE - STANDARD SIZE - METRIC	SPEED SYMBOL	LOAD INDEX	TRA/ APPLICATION	ARTICLE #	AVERAGE WEIGHT (LBS)	BAR HEIGHT (32nd / IN)
COMPACT	12.5/80R18 320/80R18	B	141	R-4	380497	119	34 / 1.06
	340/80R18	B	143	R-4	375975	127	38 / 1.19
	19.5LR24 500/70R24	B	157	R-4	371657	239	34 / 1.05
	19.5LR24 500/70R24	B	164	R-4	376842	253	34 / 1.05

L = Low-profile tire



# INDUSTRIAL SPECIAL

F-3

BIAS

- Shock-fortified nylon cord body resists impacts, cuts and punctures
- Minimizes wear through non-directional tread design
- Ideal for use on hard soil, asphalt and concrete

CATEGORY	SIZE	PLY/STAR RATING	SPEED SYMBOL	TRA/ APPLICATION	ARTICLE #	AVERAGE WEIGHT (LBS)	BAR HEIGHT (32nd / IN)
COMPACT	11L-16	10	A8	F-3	314625	45	14 / 0.44
	11L-16	12	A8	F-3	326089	46	14 / 0.44
	14.5/75-16.1	10	A8	F-3	321567	83	19 / 0.60

L = Low-profile tire



## SUPER TRACTION LOADER

I-3

BIAS

- Excellent traction through deep bar cleats
- Ideal for medium-duty service
- Long wear through tough sidewalls featuring special compounds

CATEGORY	SIZE	PLY/STAR RATING	SPEED SYMBOL	TRA/ APPLICATION	ARTICLE #	AVERAGE WEIGHT (LBS)	BAR HEIGHT (32nd / IN)
COMPACT	12.5/80-18	12	A8	I-3	359912	92	32 / 1.00



## DURAFORCE HD

NHS

BIAS

### DURAFORCE HEAVY DUTY

- Super-tough tread design for outstanding traction, durability and puncture resistance in the most demanding work conditions
- Extra-wide lugs provide longer tread wear, extending tire life and saving you money
- Specially engineered rim deflector keeps debris out, protecting against damage and flats

CATEGORY	SIZE - STANDARD SIZE - METRIC	PLY/STAR RATING	TRA/ APPLICATION	ARTICLE #	AVERAGE WEIGHT (LBS)	BAR HEIGHT (32nd / IN)
COMPACT	10-16.5 265/70D16.5	8	NHS	362123	50	20 / 0.64
	12-16.5 305/70D16.5	10	NHS	362131	75	23 / 0.64
	14-17.5 355/70D17.5	10	NHS	362158	86	24 / 0.75



# DURAFORCE DT

NHS

BIAS

## DURAFORCE DEEP TREAD

- Aggressive rim deflector keeps out debris
- Heavy-duty sidewall and large curb rib deliver more stability and greater puncture resistance
- Deep tread and extra-wide buttressed lugs deliver long wear and life
- Full sidewall protection resists punctures and flats

CATEGORY	SIZE - STANDARD SIZE - METRIC	PLY/STAR RATING	TRA/ APPLICATION	ARTICLE #	AVERAGE WEIGHT (LBS)	BAR HEIGHT (32nd / 1N)
COMPACT	27X8.50-15 215/70D15	8	NHS	360449	41	22 / 0.68
	27X10.50-15 260/65D15	8	NHS	360457	48	24 / 0.76
	31X15.50-15 390/60D15	8	NHS	360465	90	30 / 0.94
	10-16.5 265/70D16.5	8	NHS	360473	64	26 / 0.82
	12-16.5 305/70D16.5	10	NHS	360414	85	28 / 0.88
	12-16.5 305/70D16.5	12	NHS	373170	85	28 / 0.88
	31X13.00-16.5 330/55D16.5	10	NHS	360481	80	26 / 0.82



# DURAFORCE SDT

**NHS**

**BIAS**

## DURAFORCE SUPER DEEP TREAD

- Extra-deep tread provides superior wear and puncture resistance
- Rejection of debris through aggressive rim deflector
- Heavy-duty sidewall and large curb rib provide greater stability and puncture resistance
- Extra-tough nylon body construction and special puncture-resistance compounds
- Fullest possible footprint for long, even tread wear
- Heavier ply ratings for severe service construction
- Full sidewall protection provides resistance to punctures and flats

CATEGORY	SIZE - STANDARD SIZE - METRIC	PLY/STAR RATING	TRA/ APPLICATION	ARTICLE #	AVERAGE WEIGHT (LBS)	BAR HEIGHT (32nd / IN)
<b>COMPACT</b>	10-16.5 265/70D16.5	10	NHS	365707	73	20 / 0.64
	12-16.5 305/70D16.5	12	NHS	365724	103	47 / 1.47
	14-17.5 355/70D17.5	14	NHS	365741	146	24 / 0.75



## DURAFORCE ND

NHS

BIAS

### DURAFORCE NON-DIRECTIONAL

- Excellent forward and reverse traction through non-directional tread design
- Non-directional tread design improves flotation
- Excellent stability through tough sidewalls
- Highest duty rating in the Duraforce line
- Rejection of debris through aggressive rim deflector
- Heavy-duty sidewall and large curb rib provide greater stability and puncture resistance
- Premium compounds add to superior cut and puncture resistance

CATEGORY	SIZE - STANDARD SIZE - METRIC	PLY/STAR RATING	TRA/ APPLICATION	ARTICLE #	AVERAGE WEIGHT (LBS)	BAR HEIGHT (32nd / IN)
COMPACT	14-17.5 355/70D17.5	14	NHS	361674	126	24 / 0.75
	15-19.5 385/65D19.5	16	NHS	361690	182	25 / 0.79
	18-19.5 445/65D19.5	16	NHS	361712	212	28 / 0.87



## SUPER TRACTION DUPLEX

NHS

BIAS

- Excellent traction and flotation through overlapping bar cleats and low-profile design
- Performs in a variety of surface conditions
- Tough sidewall and long wear

CATEGORY	SIZE - STANDARD SIZE - METRIC	PLY/STAR RATING	TRA/ APPLICATION	ARTICLE #	AVERAGE WEIGHT (LBS)	BAR HEIGHT (32nd / IN)
COMPACT	14-17.5	10	NHS	416177	85	22 / 0.70
	15-19.5	12	NHS	416517	121	26 / 0.80
	15-22.5	16	NHS	359599	176	25 / 0.78





# DURAFORCE UTILITY

R-4

RADIAL

- Designed for small-wheeled loaders
- Strong lateral stability
- Cut and puncture resistance
- Solid grip on hard surfaces
- Uniform tread wear and long life

CATEGORY	SIZE - STANDARD SIZE - METRIC	SPEED SYMBOL	LOAD INDEX	TRA/ APPLICATION	ARTICLE #	AVERAGE WEIGHT (LBS)	BAR HEIGHT (32nd / IN)
COMPACT	340/80R18	A8	143	R-4	004502	127	26 / 0.81
	405/70R18	A2	153	R-4	003997	160	32 / 1.00

**LIMITED WARRANTY**

The following warranty contains certain rights and obligations that pertain to Bridgestone and Firestone branded off-the-road (OTR) tires. Please review these rights and obligations carefully.

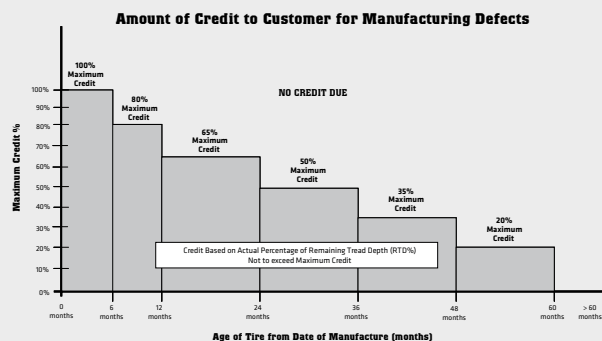
**DEFINITION**

This Limited Warranty covers all Bridgestone- and Firestone-branded OTR tires as designated in Bridgestone and Firestone OTR product listings (price books and catalogs). It does not include, among others, agricultural tires, aircraft, light construction tires or tires marked "NA" (not adjustable).

**ELIGIBILITY**

Every OTR tire bearing the name Bridgestone or Firestone and with a complete serial number molded in the sidewall is warranted to be free from manufacturing defects within the manufacturer's control. If an examination by an authorized Bridgestone or Firestone OTR representative shows that any such tire failed as a result of manufacturing defects, it will, at the option of Bridgestone Americas Tire Operations (BATO), either be repaired at no charge, or a credit will be issued toward the purchase price of a replacement tire, being a comparable Bridgestone or Firestone OTR product. This credit will be determined by applying the lesser of the percentage of remaining tread depth (RTD%) and the maximum age-based credit shown in the following chart.

The replacement percentage will be multiplied by the original purchase price of the tire (excluding federal excise tax) to determine the amount of credit to be applied. Such



credit must be applied toward the purchase price of the replacement tire in effect at the time of adjustment.

All adjusted tires will be disabled and the serial numbers will be removed. Customer is responsible for the disposal of all adjusted tires.

This warranty coverage is for OTR tires used within published designed specifications for Bridgestone and Firestone tires. Any use outside such specifications automatically voids this warranty. Please consult Bridgestone or Firestone data books, maintenance manuals, etc., for design specifications. This warranty does not apply to used or "NA" (not adjustable) tires.

**TIME PERIOD**

This warranty applies to Bridgestone and Firestone brand OTR tires for a maximum period of five years (60 months) from date of manufacture. The date of manufacture can be determined by the second and third digits in the serial number code. For non-serial controlled tires, the date of manufacture can be determined from the production lot code.

**LIMITATIONS**

This Limited Warranty is applicable to the original purchaser and is not assignable to subsequent purchasers.

No Bridgestone or Firestone dealer, agent, or representative has the authority to make or imply any representation, promise, or agreement that in any way varies or extends the terms of this warranty.

Any tire, no matter how well manufactured, may fail in service or become unserviceable due to conditions beyond the control of the manufacturer.

This Limited Warranty is under no circumstances a representation that a tire failure cannot occur.

This Limited Warranty gives you specific rights and you may also have other rights that may vary from jurisdiction to jurisdiction. To the extent that the provisions of any applicable legislation expressly replace, eliminate, amend, or prohibit any term or

terms contained herein, such term or terms shall be accordingly replaced, eliminated, amended, or extended, as the case may be, in accordance with such legislation.

**LIMITED WARRANTY EXCLUSIONS – ALL OTR TIRES AND TUBES**

All OTR tire and tube warranties are subject to the following exclusions:

1. Tires purchased more than 60 months from the date of manufacture.
2. Tires for which alternative warranties or guarantees have been negotiated.
3. Tires used under chains. BATO does recognize that in many applications tire chains provide enhanced tire protection and may extended tire life. In these cases, BATO may extend special negotiated warranties. Please consult your BATO Off-the-road Tire Division representative for details.
4. Damage resulting from misuse, improper mounting, misapplication, use of non-approved rims, improper inflation, overloading, running flat, misalignment or imbalance of wheels/rims, defective brakes or shock absorbers, abuse, willful damage, oil, chemical action, fire or other externally generated heat, use of studs, water or other material entrapped inside the tire, vehicle damage, or road hazards (such as rock cuts, punctures, cut separations, impacts, flex breaks).
5. Claims for irregular wear or rapid tread wearout are not covered by this Limited Warranty.
6. Any tire that is operated above its ton-mile-per-hour (TMPH) or tonne-kilometer-per hour (TKPH) rating.
7. Tires mounted with nonapproved tubes or o-rings.
8. Used, repaired, or retread tires.
9. Any modifications to the tire (added buttress shoulders, regrooving, relugging, etc.) void all warranties.
10. Any material added to the tire (tire fill, sealer, balancer, etc.) is not covered by this limited warranty and will not be compensated for in case of credit being issued for the tire.
11. Use of a solid type fill (such as urethane) voids all warranties.
12. Any costs associated with the repair of tires are not covered unless previously approved by BATO.
13. Costs of mounting and balancing following prorated replacement or repair of tires or tubes, and applicable federal, state, provincial, and local taxes, are not covered under this warranty.
14. Cost of disposal of warranted tires. Disposal of tires is the sole responsibility of the customer.
15. ALL OTHER WARRANTIES, INCLUDING THE IMPLIED WARRANTIES OF MERCHANTABILITY AND FITNESS FOR A PARTICULAR PURPOSE, ARE EXPRESSLY DISCLAIMED TO THE EXTENT PERMITTED BY LAW.
16. Some jurisdictions do not allow limitations in how long an implied warranty lasts, or the exclusion or limitation of incidental or consequential damages, so the above limitations or exclusions may not apply to you.
17. ALL OBLIGATIONS OR LIABILITIES FOR INDIRECT, INCIDENTAL, PUNITIVE OR CONSEQUENTIAL DAMAGE ARE HEREBY EXCLUDED TO THE EXTENT PERMITTED BY LAW, INCLUDING ECONOMIC LOSS, LOSS OF PROFIT, LOSS OF USE OF VEHICLE, LOSS OF TIME, PERSONAL INJURY OR DEATH.

**TO OBTAIN WARRANTY SERVICE**

1. Contact an authorized Bridgestone or Firestone OTR dealer or representative. Please be prepared to provide proof of purchase of the product and purchase date.
2. The authorized dealer or representative will contact Bridgestone Americas to arrange the inspection of the tire in question and processing of your claim. The dealer has no authority or responsibility to make the determination as to eligibility for coverage under this warranty.



Bridgestone Americas Tire Operations, LLC

**Off-the-road Tire Limited Warranty** – EFFECTIVE: JAN. 1, 2012

**LIMITED WARRANTY**

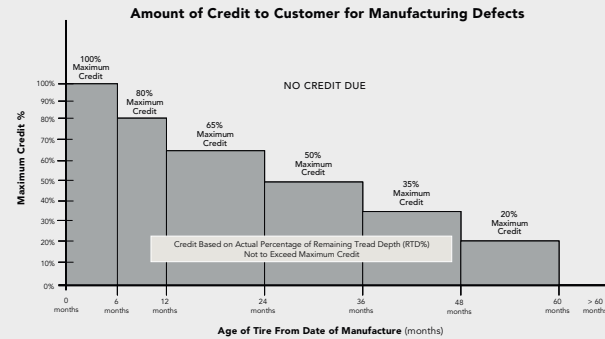
The following warranty contains certain rights and obligations that pertain to Bridgestone and Firestone branded off-the-road (OTR) tires. Please review these rights and obligations carefully.

**DEFINITION**

This Limited Warranty covers all Bridgestone- and Firestone-branded OTR tires as designated in Bridgestone and Firestone OTR product listings (price books and catalogs). It does not include, among others, agricultural tires, aircraft, light construction tires or tires marked "NA" (not adjustable).

**ELIGIBILITY**

Every OTR tire bearing the name Bridgestone or Firestone and with a complete serial number molded in the sidewall is warranted to be free from manufacturing defects within the manufacturer's control. If an examination by an authorized Bridgestone or Firestone OTR representative shows that any such tire failed as a result of manufacturing defects, it will, at the option of Bridgestone Americas Tire Operations (BATO), either be repaired at no charge, or a credit will be issued toward the purchase price of a replacement tire, being a comparable Bridgestone or Firestone OTR product. This credit will be determined by applying the lesser of the percentage of remaining tread depth (RTD%) and the maximum age-based credit shown in the following chart.



The replacement percentage will be multiplied by the original purchase price of the tire (excluding federal excise tax) to determine the amount of credit to be applied. Such credit must be applied toward the purchase price of the replacement tire in effect at the time of adjustment.

All adjusted tires will be disabled and the serial numbers will be removed. Customer is responsible for the disposal of all adjusted tires.

This warranty coverage is for OTR tires used within published designed specifications for Bridgestone and Firestone tires. Any use outside such specifications automatically voids this warranty. Please consult Bridgestone or Firestone data books, maintenance manuals, etc. for design specifications. This warranty does not apply to used or "NA" (not adjustable) tires.

**TIME PERIOD**

This warranty applies to Bridgestone and Firestone brand OTR tires for a maximum period of five years (60 months) from date of manufacture. The date of manufacture can be determined by the second and third digits in the serial number code. For non-serial controlled tires, the date of manufacture can be determined from the production lot code.

**LIMITATIONS**

This Limited Warranty is applicable to the original purchaser and is not assignable to subsequent purchasers.

No Bridgestone or Firestone dealer, agent, or representative has the authority to make or imply any representation, promise, or agreement that in any way varies or extends the terms of this warranty.

Any tire, no matter how well manufactured, may fail in service or become unserviceable due to conditions beyond the control of the manufacturer. This Limited Warranty is under no circumstances a representation that a tire failure cannot occur.

This limited warranty gives you specific rights and you may also have other rights which may vary from jurisdiction to jurisdiction.

To the extent that the provisions of any applicable legislation expressly replace, eliminate, amend or prohibit any term or terms contained herein, such term or terms shall be accordingly replaced, eliminated, amended, or extended, as the case may be, in accordance with such legislation.

**LIMITED WARRANTY EXCLUSIONS - ALL OTR TIRES AND TUBES**

All OTR tire and tube warranties are subject to the following exclusions:

1. Tires purchased more than 60 months from the date of manufacture.
2. Tires for which alternative warranties or guarantees have been negotiated.
3. Tires used under chains. BATO does recognize that in many applications tire chains provide enhanced tire protection and may extended tire life. In these cases, BATO may extend special negotiated warranties. Please consult your BATO Off-the-road Tire Division representative for details.
4. Damage resulting from misuse, improper mounting, misapplication, use of non-approved rims, improper inflation, overloading, running flat, misalignment or imbalance of wheels/rims, defective brakes or shock absorbers, abuse, willful damage, oil, chemical action, fire or other externally generated heat, use of studs, water or other material entrapped inside the tire, vehicle damage, or road hazards (such as rock cuts, punctures, cut separations, impacts, flex breaks).
5. Claims for irregular wear or rapid tread wearout are not covered by this Limited Warranty.
6. Any Tire that is operated above its ton-mile-per-hour (TMPH) or Tonne-kilometer-per hour (TKPH) rating.
7. Tires mounted with nonapproved tubes or o-rings.
8. Used, repaired, or retread tires.
9. Any modifications to the tire (added buttress shoulders, regrooving, relugging, etc.) void all warranties.
10. Any material added to the tire (tire fill, sealer, balancer, etc.) is not covered by this limited warranty and will not be compensated for in case of credit being issued for the tire.
11. Use of a solid type fill (such as urethane) voids all warranties.
12. Any costs associated with the repair of tires are not covered unless previously approved by BATO.
13. Costs of mounting and balancing following prorated replacement or repair of tires or tubes, and applicable federal, state, provincial, and local taxes, are not covered under this warranty.
14. Cost of disposal of warranted tires. Disposal of tires is the sole responsibility of the customer.
15. ALL OTHER WARRANTIES, INCLUDING THE IMPLIED WARRANTIES OF MERCHANTABILITY AND FITNESS FOR A PARTICULAR PURPOSE, ARE EXPRESSLY DISCLAIMED TO THE EXTENT PERMITTED BY LAW.
16. Some jurisdictions do not allow limitations in how long an implied warranty lasts, or the exclusion or limitation of incidental or consequential damages, so the above limitations or exclusions may not apply to you.
17. ALL OBLIGATIONS OR LIABILITIES FOR INDIRECT, INCIDENTAL, PUNITIVE OR CONSEQUENTIAL DAMAGE ARE HEREBY EXCLUDED TO THE EXTENT PERMITTED BY LAW, INCLUDING ECONOMIC LOSS, LOSS OF PROFIT, LOSS OF USE OF VEHICLE, LOSS OF TIME, PERSONAL INJURY OR DEATH.

**TO OBTAIN WARRANTY SERVICE**

1. Contact an authorized Bridgestone or Firestone OTR dealer or representative. Please be prepared to provide proof of purchase of the product and purchase date.
2. The authorized dealer or representative will contact Bridgestone Americas to arrange the inspection of the tire in question and processing of your claim. The dealer has no authority or responsibility to make the determination as to eligibility for coverage under this warranty.



Bridgestone Americas Tire Operations, LLC  
**Covered Radial Construction Tires**

**LIMITED WARRANTY**

This Limited Warranty covers original-tread Firestone-branded radial construction tires purchased or manufactured after Jan. 1, 2009, if they are used in normal construction service. It does not cover tires marked "NO ADJ" or "NA" (non-adjustable), or tires not containing the Firestone serial number. Tires branded "DT" (damaged tire) are not adjustable for appearance.

**WHAT IS WARRANTED**

Subject to the terms and conditions of this Limited Warranty, any covered tire that becomes unusable for any reason within the manufacturer's control, before wearing down to 2/32" of the original tread or bar depth remaining, shall be replaced with an equivalent new Firestone construction tire on a pro rata basis.

This warranty is in addition to, and/or may be limited by, any other applicable written warranty (covering special tires or situations) you may have received.

**WHAT IS NOT WARRANTED**

Unusable tires caused by:

1. Field or road hazards (e.g., cut, snag, puncture, stubble damage, impact break, tear or chunk in tread, bar, or shoulder).
2. Overloading, improper inflation pressure or abuse.
3. Wheel misalignment; rim slip; tire/wheel assembly imbalance; mismatching of adjacent tires; or other vehicle conditions, defects, or characteristics.
4. Abnormal stress from land leveling or earthmoving operations.
5. Improper repair or improper insertion of sealant, balancing or filler materials.
6. Intentional alteration of either the appearance or the physical characteristics of the tire.
7. Improper maintenance, improper mounting, improper storage or conditions that cause accelerated aging.
8. Failure to observe any of the "Owner-User's Obligations" published by Firestone.

This Limited Warranty is in addition to, and/or may be limited by, any other applicable written warranty you may have received concerning special tires or situations.

**LIMITED WARRANTY PERIOD AND COMMERCIAL ADJUSTMENT POLICY**

Tires are adjustable for ride-related conditions only during the first six months of service and before 1/32" of tread wear.

Tires that become unusable during the two years of service proof-of-purchase must be attached to claim form) and have worn less than 25% of the original tread will be replaced without charge, including normal mounting and services charges.

Tires that become unusable after the second year of service or have worn beyond 25% of the original tread will be replaced on a pro rata basis according to the schedule below. To determine the replacement price, the appropriate pro rata percentage is multiplied by the owner-user's regular buying price. Appropriate taxes, mounting or other service charges are not covered by the warranty and will be added to the pro rata replacement price.

The replacement price will be prorated based on years of service from the original purchase date if proof of purchase is attached to claim form. If proof of purchase is not available or if the tire(s) was not purchased new, then the replacement price will be based on years from date of manufacture, which is molded into the sidewall of the tire.

Years of Service or Age During	If Worn Less Than	Pro Rata Collection
3 <sup>RD</sup> YEAR	30%	30%
4 <sup>TH</sup> YEAR	40%	40%
5 <sup>TH</sup> YEAR	50%	50%
6 <sup>TH</sup> YEAR	60%	60%
7 <sup>TH</sup> YEAR	70%	70%
8 <sup>TH</sup> YEAR	80%	80%
9 <sup>TH</sup> YEAR	90%	90%
After the end of the 8 <sup>TH</sup> YEAR, coverage expires.		100%

**CONDITIONS AND EXCLUSIONS**

THERE ARE NO WARRANTIES, EXPRESS OR IMPLIED, INCLUDING THE IMPLIED WARRANTY OF MERCHANTABILITY AND FITNESS FOR A PARTICULAR PURPOSE, WHICH EXTEND BEYOND THIS WARRANTY.

BATO specifically excludes any obligation for consequential damages or incidental expenses, including claims for loss of use of the vehicle on which the covered tires are installed, loss of time, inconvenience, or commercial loss. Under no circumstances will BATO, its parent, subsidiaries or affiliated entities, be liable and expressly disclaim liability for any special, exemplary, indirect, incidental, contingent, consequential and punitive damages, for any cause of action, whether in warranty, contract, tort, strict liability or otherwise, of any kind or nature, including without limitation, loss of time or actual or anticipated profits, revenues, or business, loss of use of products or any associated equipment, cost of capital, facilities, substitute products or services, downtime, delay or slowdown costs, spoilage of material, or for any other economic loss, or inconvenience, whether or not either party was aware or should have been aware of the possibility of such loss or damages.

This warranty gives you specific legal rights. You may also have other rights that may vary from state to state. Some states do not allow limitations on how long an implied warranty lasts or allow the exclusion or limitation of incidental or consequential damages. The above limitation or exclusion may not apply to you.

Only the actual owner-user of the covered tires may make an adjustment claim under this Limited Warranty and Commercial Adjustment Policy, and only for tires used in the 50 United States and the District of Columbia.

Nothing in this Limited Warranty is intended to be a representation that failures cannot occur.

**OWNER-USER'S OBLIGATIONS**

Proper tire care is necessary to obtain maximum usage and wear.

The owner-user's obligations are to operate tires within tire load and speed limits (at cold air pressures specified by Bridgestone Americas Tire Operations, LLC for load and speed according to individual tire size, type, and load capacity) and to maintain proper alignment of wheels.

In case of an adjustment claim, the owner-user must present the tire to an authorized Firestone dealer or store; complete and sign the customer section of the adjustment claim form; attach to the claim form a copy of the proof of purchase showing the date the tire was purchased new or proof of purchase of the new construction equipment that the tire came on; and pay the appropriate replacement price, taxes, and service charges for a new, current equivalent Firestone-branded tire.

The obligation of Bridgestone Americas Tire Operations, LLC under this Limited Warranty and Commercial Adjustment Policy may not be enlarged or altered by anyone.

Copyright © 2019 Bridgestone Americas Tire Operations, LLC



Bridgestone Americas Tire Operations, LLC

### Covered Radial Construction Tires

#### LIMITED WARRANTY

This Limited Warranty covers new original-tread Firestone brand construction tires (R-4, F-3, I-3, NHS) purchased or manufactured after January 1, 2009, used in normal construction service. It does not cover tires marked "NO ADJ" or "NA" (nonadjustable) or tires not containing the Firestone serial number. Tires branded DT (damaged tire) are not adjustable for appearance. NOTE: For radial tires, please refer to the Firestone Radial Warranty for adjustment warranty information.

#### WHAT IS WARRANTED

Subject to the terms and conditions of this Limited Warranty, any covered tire that becomes unusable for any reason within the manufacturer's control, before wearing down to 2/32" of the original tread or bar depth remaining, shall be replaced with an equivalent new Firestone construction tire on a pro rata basis.

This Limited Warranty is in addition to, and/or may be limited by, any other applicable written warranty you may have received concerning special tires or situations.

#### WHAT IS NOT WARRANTED

##### Unusable tires caused by:

1. Field or road hazards (e.g., cut, snag, puncture, stubble damage, impact break, tear or chunk in tread, bar or shoulder);
2. Overloading, improper inflation pressure or abuse;
3. Wheel misalignment, rim slip, tire/wheel assembly imbalance, mismatching of adjacent tires, or other vehicle conditions, defects or characteristics;
4. Abnormal stress from land leveling or earth moving operations;
5. Improper repair or improper insertion of sealant, balancing or filler materials;
6. Intentional alteration of either the appearance or the physical characteristics of the tire;
7. Improper maintenance, improper mounting, improper storage or conditions that cause accelerated aging; and
8. Failure to observe any of the "Owner-User's Obligations" published by Firestone

#### LIMITED WARRANTY PERIOD AND COMMERCIAL ADJUSTMENT POLICY

Tires are adjustable for ride-related conditions only during the first six months of service and before 1/32" of tread wear.

Tires that become unusable during the first year of service (proof of purchase must be attached to claim form) and worn less than 10% of the original tread, will be replaced without charge.

Tires that become unusable after the first year of service or worn beyond 10% of the original tread, will be replaced on a pro rata basis according to the schedule below. To determine the replacement price, the appropriate pro rata percentage is multiplied by the owner-user's regular buying price. Appropriate taxes, mounting or other service charges are not covered by the warranty and will be added to the pro rata replacement price.

The replacement price will be prorated based on years of service from the original purchase date if proof of purchase is attached to claim form, or if proof of purchase is not available or if tire was not purchased new, then based on years from date of manufacture which is molded into the sidewall of the tire.

Years of Service or Age During	If Worn Less Than	Pro Rata Collection
2 <sup>ND</sup> YEAR	20%	20%
3 <sup>RD</sup> YEAR	40%	40%
4 <sup>TH</sup> YEAR	50%	50%
5 <sup>TH</sup> YEAR	60%	60%
6 <sup>TH</sup> YEAR	70%	70%
7 <sup>TH</sup> YEAR	80%	80%
8 <sup>TH</sup> YEAR	90%	90%
After the end of the 8 <sup>TH</sup> YEAR, coverage expires.		100%

#### CONDITIONS AND EXCLUSIONS

THERE ARE NO WARRANTIES, EXPRESS OR IMPLIED, INCLUDING THE IMPLIED WARRANTY OF MERCHANTABILITY AND FITNESS FOR A PARTICULAR PURPOSE, WHICH EXTEND BEYOND THIS WARRANTY.

BATO specifically excludes any obligation for consequential damages or incidental expenses including claims for loss of use of the vehicle on which the covered tires are installed, loss of time, inconvenience, or commercial loss. Under no circumstances will BATO, its parent, subsidiaries or affiliated entities, be liable and expressly disclaim liability for any special, exemplary, indirect, incidental, contingent, consequential and punitive damages, for any cause of action, whether in warranty, contract, tort, strict liability or otherwise, of any kind or nature, including without limitation, loss of time or actual or anticipated profits, revenues, or business, loss of use of products or any associated equipment, cost of capital, facilities, substitute products or services, downtime, delay or slowdown costs, spoilage of material, or for any other economic loss, or inconvenience, whether or not either party was aware or should have been aware of the possibility of such loss or damages.

This Limited Warranty gives you specific legal rights. You may also have other rights that may vary from state to state. Some states do not allow limitations on how long an implied warranty lasts or allow the exclusion or limitation of incidental or consequential damages. The above limitation or exclusion may not apply to you.

Only the actual owner-user of the covered tires may make an adjustment claim under this Limited Warranty and Commercial Adjustment Policy, and only for tires used in the 50 United States and the District of Columbia.

#### OWNER-USER'S OBLIGATIONS

Proper tire care is necessary to obtain maximum usage and wear.

The owner-user's obligations are to operate tires within tire load and speed limits (at cold air pressures specified by Bridgestone Americas Tire Operations, LLC for load and speed according to individual tire size, type, and load capacity) and to maintain proper alignment of wheels.

In case of an adjustment claim, the owner-user must present the tire to an authorized Firestone dealer or store, complete and sign the customer section of the adjustment claim form, attach to the claim form a copy of the proof of purchase showing the date the tire was purchased new or proof of purchase of the new construction equipment that the tire came on, and pay the appropriate replacement price, taxes and service charges for a new, current equivalent Firestone brand tire.

The obligation of Bridgestone Americas Tire Operations, LLC under this Limited Warranty and Commercial Adjustment Policy may not be enlarged or altered by anyone.

Copyright © 2019 Bridgestone Americas Tire Operations, LLC



**BRIDGESTONE**

**Firestone**

---

200 4th Ave. S • Nashville, TN 37214

CUSTOMER SERVICE

**800.572.8905**

OTRCUSTOMERSERVICE@BFUSA.COM

---

BS100 - V21 © Bridgestone Americas Tire Operations LLC. All Rights Reserved.



PRINTED ON  
RECYCLED PAPER

